



Description of the study programme

Source: SAAVŠ

Name of the higher education institution: University of Žilina

Address of the higher education institution: Univerzitná 8215/1, 010 26 Žilina

Identification number of the higher education institution:

Name of the faculty: Faculty of Operation and Economics of Transport and Communications

Address of the faculty: Univerzitná 8215/1, 010 26 Žilina

Institution body for approving the study programme: Akreditačná rada Žilinskej univerzity v Žiline

Date of the study programme approval or the study programme modification: XXXXX

Date of the latest change¹ in the study programme description: XXXXX

Reference to the results of the latest periodic review of the study programme by the institution: -

Reference to the assessment report of the application for accreditation of the study programme under § 30 of Act no. 269/2018 Coll.:

1. Basic information about the study programme							
a	Name of the study program	Railway Transport	Number according to the register of study programmes	21492			
b	Degree of higher education	2	ISCED-F education degree code	767			
c	Place(s) of delivery of the study programme	Univerzitná 8215/1, 010 26 Žilina					
d	Name of the field / Combination of two fields of study	Transport	Number of the field of study	3772R00			
			ISCED-F codes of the field/fields	1041			
e	Type of the study programme	Academically oriented					
f	Awarded academic degree	Engineer (abbreviated as Ing.)					
g	Form of study	present					
h	Cooperating institutions and the range of study obligations the student fulfils at each of the given institutions	The study program is not a joint study program with another university.					
i	Language or languages in which the study programme is delivered	English					
j	Standard length of the study expressed in academic years	2 years					
k	Capacity of the study programme (planned number of students)	1 st year of study: 60 2 nd year of study: 60 3 rd year of study: 4 th year of study:					
	Actual number of applicants	Year of study	2017/ 2018	2018/ 2019	2019/ 2020	2020/2 021	2021/ 2022

¹ If the change is not a modification of the study programme according to § 30 of Act no. 269/2018 Coll.



		1st year of study	N.A.	N.A.	N.A.	N.A.	N.A.	N.A.
Actual number of applicants and students	Year of study	2017/2018	2018/2019	2019/2020	2020/2021	2021/2022	2022/2023	
	1 st year of study	N.A.	N.A.	N.A.	N.A.	N.A.	N.A.	
	2 nd year of study	N.A.	N.A.	N.A.	N.A.	N.A.	N.A.	

2. Graduate profile and learning objectives	
a	<p>Learning objectives of the study programme such as student's abilities at the time of completion of the programme and the main learning outcomes</p> <p>The goal of the 2nd-cycle Railway Transport study programme is to prepare graduates who can effectively plan, manage, organize, and evaluate transportation and logistics technological processes. They are also equipped to perform business economic activities or engage in independent business ventures within the transportation sector. Graduates acquire expertise in railway transport technology and logistics, covering both freight and passenger transport. Additionally, they gain knowledge of other transport sectors, legal norms in railway transport, and international economic relations within transport and logistics chains.</p> <p>Graduates are capable of managing, analysing, modelling, designing, and developing railway transport and logistics technologies, emphasizing quality, cost optimization, and ecological aspects of transport. They can analyse and forecast transportation needs, make effective decisions regarding appropriate modes of transportation services, and apply operational analysis methods, implement modern management systems using computational technologies, and telematics.</p> <p>They establish visions, missions, and strategic objectives for enterprises in all areas. They develop concepts for human resources management and performance management systems and define strategic developmental and investment plans. Graduates are capable of presenting information on the progress and outcomes of task solutions, communicating expert opinions with professionals. They can solve problems, coordinate team efforts, and independently and responsibly make decisions in a changing environment, bearing accountability for their actions and decisions with consideration of broader societal impacts. They can analyse the processes of international economic integration and their effects on individual national economies, including the context of international funding schemes. They understand the functioning of economies at both microeconomic and macroeconomic levels.</p> <p>The educational process emphasizes acquiring theoretical and practical capabilities that enable proper adaptation, continued professional growth, and practical application of graduates, fostering high levels of creativity in team management, independent project leadership, and responsibility for addressing complex problems in railway, integrated, corporate transport, and intermodal logistics.</p> <p>Graduates have deep and interdisciplinary knowledge in the specialized field of railway transport, including understanding connections and relationships with related fields. They are familiar with and understand the theories, methods, and practices used in the transport field, focusing on railway transport, with possible applications in science and research.</p>



The theoretical foundation of the program includes disciplines in operational analysis and economics. Additionally, knowledge is developed in specialized disciplines focusing on modelling the technology of transport, logistics, and economic processes (including pricing and tariffs in transport and controlling). Graduates refine their profiles by selecting elective courses focused on management, controlling, transportation processes, and railway infrastructure. The instruction emphasizes the application of operational research and information technologies in transportation, with a particular focus on modelling and simulating transport systems and processes (optimizing network processes), economics, and logistics. At the end of the program, graduates must demonstrate comprehensive systemic knowledge and creative capabilities in conceptually solving an assigned task, including a technical-economic analysis of the proposed solution, through the defense of a thesis. Graduates can actively acquire new knowledge and information, integrate and utilize them in applications for the advancement of the field. They can creatively solve theoretical and practical problems in railway transport using theory and research and development methods, contributing to the progress of railway transport by acquiring new knowledge while addressing these tasks. The qualifications of graduates upon program completion are determined by the knowledge, skills, and competencies they have acquired, which are defined in the educational objectives. The acquired knowledge, skills, and competencies, as educational outcomes, stem from specific educational objectives of the core courses in the study program, as outlined in the course descriptions.

Educational Objectives

EO1

The graduate acquires profound interdisciplinary knowledge in the field of transportation systems theory, transport technology, and services in the specialized area of railway transport, including understanding the connections and relationships to related fields. They are familiar with and understand the theories, methods, and practices utilized in the field of transportation, with potential applications in science and research.

EO2

They comprehend the concepts, principles, and relationships applied in managing, planning, coordinating, and controlling transportation and logistics technological systems and chains, with a focus on the quality of transportation services.

EO3

The graduate is capable of managing, analysing, modelling, designing, and developing railway transportation and logistics technologies. They are familiar with the legal norms for providing transportation services in railway transport, as well as economic and international relations within the organization of transportation or logistics chains.

EO4

The graduate can analyse and forecast transportation needs, make effective decisions regarding appropriate transportation solutions, and apply operational analysis methods, including the implementation of modern management systems utilizing computational technology and telematics.



EO5

They possess knowledge, skills, and expertise in operational processes within freight and passenger railway transport, as well as fundamental knowledge of other transportation sectors and logistics. They can evaluate economic activities at the sectoral level.

EO6

The graduate gains the ability to analyse problems and processes in railway transport and logistics, specify requirements for their resolution, and propose innovative strategic solutions. They can make and defend critical decisions while taking responsibility for creating communication programs for collaboration with customers, contractual partners, and other stakeholders in the transportation market.

EO7

The graduate develops the ability to fulfil tasks in human resource management in the context of strategic development and investment plans. They are capable of formulating information on the progress and results of task solutions, communicating professional opinions with experts, solving problems, coordinating team efforts, and working independently and responsibly.

EO8

The graduate acquires comprehensive managerial skills in railway transport, including the ability to develop strategic and investment projects, apply economic evaluation and forecasting, and utilize information systems effectively.

Learning Outcomes:

LO1

The graduate possesses profound interdisciplinary knowledge in the field of transportation, focusing on the theory of transportation systems with a specialization in railway transport, at a level corresponding to the current state of knowledge. They have an extensive conceptual framework and understand theories, methods, and practices utilized in the field of transportation, with potential applications in science and research.

LO2

The graduate can apply methods of planning and forecasting, analysis, and synthesis in the design, coordination, and management of transportation and logistics technological systems and chains, with an emphasis on the quality of transportation services.

LO3

The graduate can analyse, manage, model, and optimize transportation and logistics processes in railway transport and logistics, within the context of the legal framework and international relations.

LO4

The graduate can apply methods and procedures of operational analysis in transportation systems, forecast transportation needs, and make decisions about transportation services, including the use of operational analysis methods, computational technology, and telematics.



LO5

The graduate can apply economic principles in the railway transport sector, adhere to controlling standards, and choose appropriate procedures for cost calculation in railway transport, with a focus on understanding the technology of operational processes in both freight and passenger transportation.

LO6

The graduate can analyse processes in railway transport and logistics, propose innovative strategic solutions, make strategic decisions, and take responsibility for creating communication programs to collaborate with customers, contractual partners, and other stakeholders in the transportation market.

LO7

The graduate is capable of managing human resources in railway transport within the context of strategic development and investment plans. They can clearly formulate goals, tasks, and solutions, communicate results, and express their own thoughts, attitudes, and strategies. They are prepared for argumentation, discussion, and taking responsibility for achieved outcomes.

LO8

The graduate has comprehensive managerial skills in railway transport, can communicate with business partners and customers, and is capable of negotiating business and transportation conditions. They can apply tools for building and managing customer relationships and marketing communication tools. Additionally, they are competent in effectively utilizing ICT tools and applications of various informational and database systems in project management and forecasting economic indicators in railway transport.

Study program Railway transport 2 nd degree										
Study year	Semester	Profile course/study program course	LO1	LO2	LO3	LO4	LO5	LO6	LO7	LO8
EO1 Through the study, the graduate acquires deep cross-sectional knowledge in the field of the theory of transport systems, transport technology and services in the specialized field of railway transport, including knowledge of contexts and relations to related fields, knows and understands the theories, methods and procedures that are used in the field of transport with possible application in science and research.										
1	1	International Railway Transport 1	X				X			
1	1	Controlling in Railway Transport 1	X	X			X			
1	1	Project Management in Transport	X		X					
1	1	Railway Transport Technology	X	X						X
1	2	Modelling of Traffic and Transportation Processes 1	X	X				X		X
1	2	Prices and Tariffs	X	X	X					
1	2	Integrated Transport Systems	X	X						
1	2	Project on Economic Processes	X	X	X					
2	3	Passenger Transport and Transportation	X	X	X		X			
2	3	Quality Management in Railway Transport	X	X	X		X	X		
2	3	Modelling of Traffic and Transportation Processes 2	X	X			X	X		X
2	3	Project on Transportation Processes	X		X		X			
2	3	Controlling in Railway Transport 2	X							
2	3	Project on Transport Processes	X	X						X
2	3	Railway Transport Infrastructure	X				X	X		X
2	4	International Railway Transport 2	X	X	X		X			
2	4	Managerial Decision-Making in Practice								
2	4	Final thesis	X	X						X



Study program Railway transport 2 nd degree										
Study year	Semester	Profile course/study program course	L01	L02	L03	L04	L05	L06	L07	L08
EO2 Understanding of concepts, principles and contexts applied in the management, planning, coordination, control of transport and transportation technological systems and chains with an emphasis on the quality of the transport service										
1	1	International Railway Transport 1					X			
1	1	Controlling in Railway Transport 1	X	X						
1	1	Project Management in Transport	X		X					
1	1	Railway Transport Technology	X	X		X				X
1	2	Modelling of Traffic and Transportation Processes 1	X	X		X		X		X
1	2	Prices and Tariffs	X	X	X					
1	2	Integrated Transport Systems		X		X				
1	2	Project on Economic Processes	X	X	X					
2	3	Passenger Transport and Transportation	X	X	X		X			
2	3	Quality Management in Railway Transport	X	X	X		X	X		
2	3	Modelling of Traffic and Transportation Processes 2	X	X	X		X	X		X
2	3	Project on Transportation Processes					X			
2	3	Controlling in Railway Transport 2		X		X			X	X
2	3	Project on Transport Processes		X		X				X
2	3	Railway Transport Infrastructure	X	X	X		X	X	X	X
2	4	International Railway Transport 2	X	X	X		X		X	
2	4	Managerial Decision-Making in Practice		X	X		X			
2	4	Final thesis	X	X		X			X	X

Study program Railway transport 2nd degree										
Study year	Semester	Profile course/study program course	L01	L02	L03	L04	L05	L06	L07	L08
EO3 The graduate is able to manage, analyze, model, propose and develop railway transport and transportation technologies, knows the legal standards for the provision of transport services in railway transport, economic and international relations in transport organizations, respectively, logistics chain										
1	1	International Railway Transport 1			X		X			
1	1	Controlling in Railway Transport 1	X		X	X	X	X		
1	1	Project Management in Transport	X		X			X		
1	1	Railway Transport Technology			X	X		X		
1	2	Modelling of Traffic and Transportation Processes 1	X	X	X	X		X		X
1	2	Prices and Tariffs	X	X	X		X	X		
1	2	Integrated Transport Systems			X	X				
1	2	Project on Economic Processes	X	X	X		X	X		
2	3	Passenger Transport and Transportation			X					
2	3	Quality Management in Railway Transport		X	X					
2	3	Modelling of Traffic and Transportation Processes 2		X	X	X	X			X
2	3	Project on Transportation Processes			X		X	X		
2	3	Controlling in Railway Transport 2	X		X	X	X	X		X
2	3	Project on Transport Processes			X	X				X
2	3	Railway Transport Infrastructure			X	X				
2	4	International Railway Transport 2		X	X					
2	4	Managerial Decision-Making in Practice		X	X			X		
2	4	Final thesis	X		X	X		X		X

Study program Railway transport 2nd degree										
Study year	Semester	Profile course/study program course	L01	L02	L03	L04	L05	L06	L07	L08
EO4 The graduate can analyze and forecast transport needs, effectively decide on suitable methods of transport service, including the use of operational analysis methods, implementation of modern control systems using computer technology and telematics.										
1	1	International Railway Transport 1				X	X			
1	1	Controlling in Railway Transport 1		X		X	X			
1	1	Project Management in Transport			X	X				
1	1	Railway Transport Technology		X		X				
1	2	Modelling of Traffic and Transportation Processes 1		X	X	X	X			
1	2	Prices and Tariffs		X	X	X				
1	2	Integrated Transport Systems		X		X	X			X
1	2	Project on Economic Processes		X	X	X	X			
2	3	Passenger Transport and Transportation			X	X				
2	3	Quality Management in Railway Transport		X	X	X				
2	3	Modelling of Traffic and Transportation Processes 2		X		X	X			
2	3	Project on Transportation Processes			X	X				
2	3	Controlling in Railway Transport 2		X		X				X
2	3	Project on Transport Processes		X		X				X
2	3	Railway Transport Infrastructure				X	X			X
2	4	International Railway Transport 2		X	X	X	X			X
2	4	Managerial Decision-Making in Practice			X	X	X			
2	4	Final thesis		X		X				X



Study program Railway transport 2nd degree

Study year	Semester	Profile course/study program course	LO1	LO2	LO3	LO4	LO5	LO6	LO7	LO8
------------	----------	-------------------------------------	-----	-----	-----	-----	-----	-----	-----	-----

EO5 The graduate is able to manage railway traffic operations, take responsibility for safety and health protection at work, for the process of providing services to customers in the required scope and quality.

1	1	International Railway Transport 1					X			
1	1	Controlling in Railway Transport 1					X	X		
1	1	Project Management in Transport					X	X		
1	1	Railway Transport Technology					X	X		
1	2	Modelling of Traffic and Transportation Processes 1				X	X	X		X
1	2	Prices and Tariffs	X				X		X	
1	2	Integrated Transport Systems				X	X			
1	2	Project on Economic Processes	X				X		X	
2	3	Passenger Transport and Transportation					X	X		
2	3	Quality Management in Railway Transport	X				X	X	X	
2	3	Modelling of Traffic and Transportation Processes 2	X				X	X		
2	3	Project on Transportation Processes	X				X			
2	3	Controlling in Railway Transport 2				X	X			X
2	3	Project on Transport Processes				X	X			X
2	3	Railway Transport Infrastructure	X				X		X	X
2	4	International Railway Transport 2	X				X	X	X	
2	4	Managerial Decision-Making in Practice					X	X	X	
2	4	Final thesis	X			X	X		X	X

Study program Railway transport 2nd degree

Study year	Semester	Profile course/study program course	LO1	LO2	LO3	LO4	LO5	LO6	LO7	LO8
------------	----------	-------------------------------------	-----	-----	-----	-----	-----	-----	-----	-----

EO6 The graduate will acquire the ability to analyze problems and processes in railway transport and transportation, specify requirements for their solution and propose innovative strategic solutions, accept and defend fundamental decisions and take responsibility for creating communication programs for cooperation with customers, contractual partners and other interested entities in the transport market .

1	1	International Railway Transport 1						X		
1	1	Controlling in Railway Transport 1		X				X		
1	1	Project Management in Transport		X				X		X
1	1	Railway Transport Technology		X	X			X	X	X
1	2	Modelling of Traffic and Transportation Processes 1		X		X		X	X	X
1	2	Prices and Tariffs						X		
1	2	Integrated Transport Systems		X		X		X		
1	2	Project on Economic Processes		X				X	X	
2	3	Passenger Transport and Transportation						X		
2	3	Quality Management in Railway Transport		X		X		X	X	
2	3	Modelling of Traffic and Transportation Processes 2		X		X		X		X
2	3	Project on Transportation Processes						X		
2	3	Controlling in Railway Transport 2				X		X		X
2	3	Project on Transport Processes		X		X		X	X	X
2	3	Railway Transport Infrastructure						X		X
2	4	International Railway Transport 2		X				X	X	X
2	4	Managerial Decision-Making in Practice						X		X
2	4	Final thesis		X		X		X	X	X

Study program Railway transport 2nd degree

Study year	Semester	Profile course/study program course	LO1	LO2	LO3	LO4	LO5	LO6	LO7	LO8
------------	----------	-------------------------------------	-----	-----	-----	-----	-----	-----	-----	-----

EO7 The graduate will acquire the ability to perform tasks in the field of human resources management in the context of strategic development and investment plans. The graduate is able to formulate information about the procedure and results of solving tasks, communicate professional opinions with experts and can solve problems, coordinate procedures in teams and work independently and responsibly.

1	1	International Railway Transport 1					X			
1	1	Controlling in Railway Transport 1					X	X	X	
1	1	Project Management in Transport							X	
1	1	Railway Transport Technology							X	
1	2	Modelling of Traffic and Transportation Processes 1						X	X	X
1	2	Prices and Tariffs		X						
1	2	Integrated Transport Systems							X	
1	2	Project on Economic Processes							X	
2	3	Passenger Transport and Transportation					X	X		
2	3	Quality Management in Railway Transport					X	X	X	
2	3	Modelling of Traffic and Transportation Processes 2					X	X	X	
2	3	Project on Transportation Processes					X		X	
2	3	Controlling in Railway Transport 2							X	X
2	3	Project on Transport Processes		X					X	X
2	3	Railway Transport Infrastructure					X			X
2	4	International Railway Transport 2					X	X		
2	4	Managerial Decision-Making in Practice					X	X	X	
2	4	Final thesis		X					X	X



		Study program Railway transport 2nd degree								
Study year	Semester	Profile course/study program course	LO1	LO2	LO3	LO4	LO5	LO6	LO7	LO8
E08 The graduate acquires the complex skills of a manager in railway transport, capable of creating development and investment projects, applying economic evaluation and forecasts with the support of information systems.										
1	1	International Railway Transport 1								X
1	1	Controlling in Railway Transport 1			X					X
1	1	Project Management in Transport	X		X					X
1	1	Railway Transport Technology	X							X
1	2	Modelling of Traffic and Transportation Processes 1			X			X		X
1	2	Prices and Tariffs	X							X
1	2	Integrated Transport Systems								X
1	2	Project on Economic Processes	X						X	X
2	3	Passenger Transport and Transportation								X
2	3	Quality Management in Railway Transport							X	X
2	3	Modelling of Traffic and Transportation Processes 2			X			X		X
2	3	Project on Transportation Processes	X		X					X
2	3	Controlling in Railway Transport 2	X		X					X
2	3	Project on Transport Processes	X		X					X
2	3	Railway Transport Infrastructure	X						X	X
2	4	International Railway Transport 2						X	X	X
2	4	Managerial Decision-Making in Practice	X						X	X
2	4	Final thesis	X		X				X	X
The qualification of the graduate upon completion of the program is determined by the knowledge, skills, and competencies acquired, as outlined in the educational objectives. The acquired knowledge, skills, and competencies are derived from the specific educational objectives of individual courses within the study program, as stated in the learning outcomes detailed in the course information sheets.										
b	Indicated professions for which the graduate is prepared at the time of completion and the potential of the study programme from the point of view of graduate's employability		List of professions according to the job classification system in which graduates can find employment: Manager in Railway Infrastructure https://www.sustavapovolani.sk/register-zamestnani/pracovna-oblast/karta-zamestnania/7056-zamestnanie/27/ Specialist for Management and Maintenance of Railway Infrastructure https://www.sustavapovolani.sk/register-zamestnani/pracovna-oblast/karta-zamestnania/7059-zamestnanie/ Specialist in Transport and Railway Operations https://www.sustavapovolani.sk/register-zamestnani/pracovna-oblast/karta-zamestnania/7057-zamestnanie/ Manager in Railway Infrastructure https://www.sustavapovolani.sk/register-zamestnani/pracovna-oblast/karta-zamestnania/7056-zamestnanie/ Manager in Railway Transport https://www.sustavapovolani.sk/register-zamestnani/pracovna-oblast/karta-zamestnania/7049-zamestnanie/ Specialist in Integrated Transport https://www.sustavapovolani.sk/register-zamestnani/pracovna-oblast/karta-zamestnania/496364-specialista-pre-integrovanu-dopravu/27-doprava/ Timetable Specialist https://www.sustavapovolani.sk/register-zamestnani/pracovna-oblast/karta-zamestnania/496833-zamestnanie/27/ Manager in Pricing https://www.sustavapovolani.sk/register-zamestnani/pracovna-oblast/karta-zamestnania/9419-riadiaci-pracovnik-manazer-v-oblasti-cenotvorby/							



		<p>Specialist in Quality Management Systems https://www.sustavapovolani.sk/register-zamestnani/pracovna-oblast/karta-zamestnania/5552-specialista-riadenia-systemu-kvality/</p> <p>The professions are listed in the job classification system with a qualification level of SKKR 7.</p> <p>A graduate of the Railway Transport study program is also prepared for third-level higher education studies and can directly continue in related doctoral study programs in the field of Transportation, utilizing the knowledge and skills acquired during their studies.</p>
c	Relevant external stakeholders who have provided the statement or a favourable opinion on the compliance of the acquired qualification with the sector-specific requirements for the profession	<p>The study program does not prepare for a profession requiring a statement of compliance with sector-specific requirements for the performance of the profession.</p>

3. Employability		
a	Evaluation of the study programme graduates employability	<p>Based on the knowledge, competencies, and practical skills acquired, graduates primarily find employment at lower and middle management levels in railway transport and logistics operations within entities operating in the railway transport market, forwarding and logistics companies, as well as in state and local government bodies in the context of transport management. Additionally, they are employed in companies with sidings, by transport operators, or in transport departments of industrial enterprises.</p> <p>The department, in cooperation with the Railways of the Slovak Republic (ŽSR), organizes courses for acquiring professional qualifications for positions such as signaller, switch guard, switch operator, and dispatcher. These courses are conducted in collaboration with ŽSR and are integrated into the study program through elective courses "Transport Course 1" and "Transport Course 2." Upon successful completion of the course, students are eligible for a corporate scholarship from ŽSR.</p> <p>According to employment statistics for study program Railway Transport in Slovak language, up to 90% of graduates work in the transportation sector, specifically in railway transport or logistics. Approximately two-thirds of graduates continue their studies in the second cycle of higher education in the related study program "Railway Transport." According to the portal www.uplatnenie.sk, most graduates (over 80%) continued with follow-up engineering studies. Among those who did not pursue further engineering studies, none were unemployed according to the latest available data.</p> <p>Graduates of this study program significantly find employment within their field of study, with approximately 60% employed in transportation, particularly in the following sectors:</p> <ul style="list-style-type: none">- Transportation and warehousing,- Wholesale and retail trade,- Professional, scientific, and technical activities. <p>Based on faculty monitoring of graduate employment, systematically conducted since 2008 and available at https://fpedas.uniza.sk/~dotaznik/ (https://fpedas.uniza.sk/~dotazni</p>



k/), it was found that 26.15% of graduates secured jobs before completing their studies, and an additional 17.69% found jobs immediately after graduation. Industry-specific results from www.uplatnenie.sk correspond to the faculty's findings for the period from 2008 to 2020:

- 47.24% of graduates are employed in transportation,
- 14.17% in public administration,
- 11.81% in manufacturing enterprise management.

Since 2014, the faculty has been cooperating with the Office of Labor, Social Affairs and Family based in Bratislava, which sends data on unemployed graduates every year, broken down into bachelor's, engineering and doctoral graduates, and the faculty also publishes these in the Faculty's Annual Activity Report.

The data on the number of unemployed for the past years 2019, 2020, 2021, 2022 and 2023 are as follows:

- as of 31. 12. 2019 – 42 unemployed graduates,
- as of 31. 12. 2020 – 51 unemployed graduates,
- as of 31. 12. 2021 – 50 unemployed graduates,
- as of 31. 12. 2022 – 38 unemployed graduates,
- as of 31. 12. 2023 – 22 unemployed graduates.

The results of the faculty's own monitoring of the employment of graduates were published in the Annual Report on the Faculty's Activities in Chapter 2.7 Graduates and their Employment, until 2019:

(<https://fpedas.uniza.sk/sk/fakulta/vseobecne-informacie/organy-fakulty/vedecka-rada>)

Since 2020, the faculty has been publishing information about unemployed graduates from the Slovak Academy of Sciences

Registered Unemployed Graduates of the Railway Transport Study Program – 2nd Cycle of Study

Unemployed graduates in the records as of	31.12.2021	31.12.2022	31.12.2023
Number of Registered Unemployed Graduates:	0	1	0

Since 2013, the faculty has maintained its Internal Quality Assurance System for Education, which has been evaluated annually for its effectiveness. The evaluation reports of the Internal Quality Assurance System also include data on the Unemployment Rate of graduates, which serves as one of the indicators of quality.

The reports are available for individual years on the faculty's website as follows:

-For the year 2013:

[https:// www.fpedas.uniza.sk/images/kvalita_vzdelavania/sprava_z_hodnotenia_funkcnosti_vnutorneho_systemu_zabezpecovania_kvality_vzdelavania_na_fpedas_2013.pdf](https://www.fpedas.uniza.sk/images/kvalita_vzdelavania/sprava_z_hodnotenia_funkcnosti_vnutorneho_systemu_zabezpecovania_kvality_vzdelavania_na_fpedas_2013.pdf)

-For the year 2014

[https:// www.fpedas.uniza.sk/images/kvalita_vzdelavania/sprava_z_hodnotenia_funkcnosti_vnutorneho_systemu_zabezpecovania_kvality_vzdelavania_na_fpedas_2014.pdf](https://www.fpedas.uniza.sk/images/kvalita_vzdelavania/sprava_z_hodnotenia_funkcnosti_vnutorneho_systemu_zabezpecovania_kvality_vzdelavania_na_fpedas_2014.pdf)

-For the year 2015

[https:// www.fpedas.uniza.sk/images/kvalita_vzdelavania/sprava_z_hodnotenia_funkcnosti_vnutorneho_systemu_zabezpecovania_kvality_vzdelavania_na_fpedas_2015.pdf](https://www.fpedas.uniza.sk/images/kvalita_vzdelavania/sprava_z_hodnotenia_funkcnosti_vnutorneho_systemu_zabezpecovania_kvality_vzdelavania_na_fpedas_2015.pdf)

-For the year 2016

[https:// www.fpedas.uniza.sk/images/kvalita_vzdelavania/sprava_z_hodnotenia_funkcnosti_vnutorneho_systemu_zabezpecovania_kvality_vzdelavania_na_fpedas_2016.pdf](https://www.fpedas.uniza.sk/images/kvalita_vzdelavania/sprava_z_hodnotenia_funkcnosti_vnutorneho_systemu_zabezpecovania_kvality_vzdelavania_na_fpedas_2016.pdf)



		<p>-For the year 2017 https:// www.fpedas.uniza.sk/images/kvalita_vzdelavania/sprava_z_hodnotenia_funkcnosti_vnutorneho_systemu_zabezpecovania_kvality_vzdelavania_na_fpedas_2017.pdf</p> <p>-For the year https:// www.fpedas.uniza.sk/images/kvalita_vzdelavania/sprava_z_hodnotenia_funkcnosti_vnutorneho_systemu_zabezpecovania_kvality_vzdelavania_na_fpedas_2018.pdf</p> <p>-For the year https:// www.fpedas.uniza.sk/images/kvalita_vzdelavania/sprava_z_hodnotenia_funkcnosti_vnutorneho_systemu_zabezpecovania_kvality_vzdelavania_na_fpedas_2019.pdf</p> <p>-For the year 2020 https:// www.fpedas.uniza.sk/images/kvalita_vzdelavania/sprava_z_hodnotenia_funkcnosti_vnutorneho_systemu_zabezpecovania_kvality_vzdelavania_na_fpedas_2020.pdf</p> <p>-For the year 2020 https://www.fpedas.uniza.sk/images/kvalita_vzdelavania/sprava_z_hodnotenia_funkcnosti_vnutorneho_systemu_zabezpecovania_kvality_vzdelavania_na_fpedas_2020.pdf</p> <p>-For the year 2021 https://uniza.sk/images/kvalita_vzdelavania/sprava_z_hodnotenia_funkcnosti_vnutorneho_systemu_zabezpecovania_kvality_vzdelavania_na_fpedas_2021.pdf</p> <p>The relevant data is presented in the following table: ere is the data formatted into a clear table in English:</p> <table><thead><tr><th>Year</th><th>Rating (%)</th></tr></thead><tbody><tr><td>2013</td><td>3.00%</td></tr><tr><td>2014</td><td>7.50%</td></tr><tr><td>2015</td><td>6.20%</td></tr><tr><td>2016</td><td>6.20%</td></tr><tr><td>2017</td><td>4.20%</td></tr><tr><td>2018</td><td>2.60%</td></tr><tr><td>2019</td><td>2.50%</td></tr><tr><td>2020</td><td>9.10%</td></tr><tr><td>2021</td><td>19.90%</td></tr><tr><td>2022</td><td>19,72 %</td></tr><tr><td>2023</td><td>15,20 %</td></tr></tbody></table> <p>The inputs for measuring the Unemployment Rate of graduates were taken from the Methodology for Allocating Grants to Public Universities. The rate represents the proportion of unemployed graduates out of the total number of graduates.</p>	Year	Rating (%)	2013	3.00%	2014	7.50%	2015	6.20%	2016	6.20%	2017	4.20%	2018	2.60%	2019	2.50%	2020	9.10%	2021	19.90%	2022	19,72 %	2023	15,20 %
Year	Rating (%)																									
2013	3.00%																									
2014	7.50%																									
2015	6.20%																									
2016	6.20%																									
2017	4.20%																									
2018	2.60%																									
2019	2.50%																									
2020	9.10%																									
2021	19.90%																									
2022	19,72 %																									
2023	15,20 %																									
b	Successful graduates of the study programme	N.A.																								
c	Evaluation of the study programme quality by employers (feedback)	N.A.																								



4. Structure and content of the study programme 2

Rules for the design of study plans within the study programme

The Railway Transport study program has been developed as a proposal to revise the program in accordance with the alignment of the study program with the standards of SAAVŠ and the VSK UNIZA standards. It is not a proposal for a new study program. During the alignment process, all formalized processes of the quality assurance system for higher education at UNIZA, as well as all procedures within individual processes and the responsibilities of respective structures, are respected.

The Railway Transport study program was prepared and submitted fully in compliance with the formalized processes of the Internal Quality Assurance System at the University of Žilina (hereinafter "VSK UNIZA")—Directive No. 222, which was discussed by the Academic Senate of UNIZA on October 4, 2021, approved by the Scientific Council of UNIZA on October 14, 2021, and became effective on October 14, 2021.

The Railway Transport study program is not a new program; therefore, according to UNIZA Directive No. 204, it is subject to the rules for aligning study programs with the SAAVŠ standards for study programs as outlined in Article 10.

As part of the alignment process for the Railway Transport study program, the members of the Railway Transport Study Program Council (Rada ŠP ŽD) were discussed within the Dean's College, subsequently approved by the Scientific Council of FPEDAS, and appointed by the Dean. The Dean assigned the Chair of the Railway Transport Study Program Council the task of aligning the study program with SAAVŠ standards. The Chair submitted the proposal for program alignment to the Dean of the faculty, who then forwarded it to a professional authority for feedback. Subsequently, the Chair submitted the revised proposal to the Dean. The Dean submitted the alignment proposal to the Faculty's Guarantor Council for feedback, and after incorporating comments, forwarded it for approval to the Scientific Council of FPEDAS.

Throughout the process, if significant comments were raised regarding the proposal, it was returned to the relevant structure for the incorporation of feedback.

a The Dean, based on the approval of the proposal for aligning the study program with the standards by the Scientific Council of FPEDAS, submits a request for the assessment of compliance with the standards to the Accreditation Council of UNIZA through the UNIZA Information System for Accreditation.

Throughout the process, the individuals assessing and approving the study program (industry authority, Scientific Council of FPEDAS, and Accreditation Council of UNIZA) are different from those preparing the proposal for aligning the study program.

The nomination of members to the respective structures is recorded in the minutes of the Dean's College meetings (available at the Dean's Office), and individual members were appointed by the Dean. The composition of the structures is documented and accessible.

At the university level, policies, structures, and processes related to quality assurance are defined by UNIZA Directive No. 222, the Internal Quality Assurance System at UNIZA ("VSK" -

<https://www.uniza.sk/images/pdf/kvalita/2021/smernica-UNIZA-c-222.pdf>) as follows:

- Policies: Directive No. 222, Article 7
- Structures: Directive No. 222, Article 10; Directive No. 210 (Statute of the Accreditation Council of UNIZA); Directive No. 214 (Structures of the Internal Quality Assurance System)
- Processes: Directive No. 222, Article 16

In addition to Directive No. 222, the following directives further define procedures related to the proposal of a new study program or the revision of an existing study program:

- Directive No. 203 – Rules for Developing Recommended Study Plans for Study Programs at UNIZA - <https://www.uniza.sk/images/pdf/kvalita/2021/smernica-UNIZA-c-203.pdf>
- Directive No. 204 – Rules for Creating, Modifying, Approving, and Cancelling Study Programs at UNIZA - <https://www.uniza.sk/images/pdf/kvalita/2021/smernica-UNIZA-c-204-uplne-znenie.pdf>
- Directive No. 205 – Rules for Assigning Teachers to Ensure Study Programs at UNIZA - <https://www.uniza.sk/images/pdf/kvalita/2021/smernica-UNIZA-c-205.pdf>

²Selected characteristics of the content of the study programme can be stated directly in the Course information sheets or supplemented by the information of the Course information sheets.



- Directive No. 212 – Rules for Defining the Workload of Creative Staff at UNIZA - <https://www.uniza.sk/images/pdf/kvalita/2021/smernica-UNIZA-c-212.pdf>
- Directive No. 217 – Resources to Support Educational, Creative, and Other Related Activities at the University of Žilina - <https://www.uniza.sk/images/pdf/kvalita/2021/smernica-UNIZA-c-217.pdf>
- Directive No. 218 – On Collecting, Processing, Analyzing, and Evaluating Information to Support the Management of Study Programs - <https://www.uniza.sk/images/pdf/kvalita/2021/smernica-UNIZA-c-218.pdf>
- Directive No. 218 on the collection, processing, analysis and evaluation of information to support the management of study programs - <https://www.uniza.sk/images/pdf/kvalita/2021/smernica-UNIZA-c-218.pdf>
- Directive No. 220 – Evaluation of Creative Activities of Staff in Relation to Ensuring the Quality of Education at UNIZA - <https://www.uniza.sk/images/pdf/kvalita/2021/smernica-UNIZA-c-220.pdf>
- Directive No. 221 – Collaboration of UNIZA with External Partners from Practice - <https://www.uniza.sk/images/pdf/kvalita/2021/smernica-UNIZA-c-221.pdf>

b Recommended study plans for individual study paths

Legend:

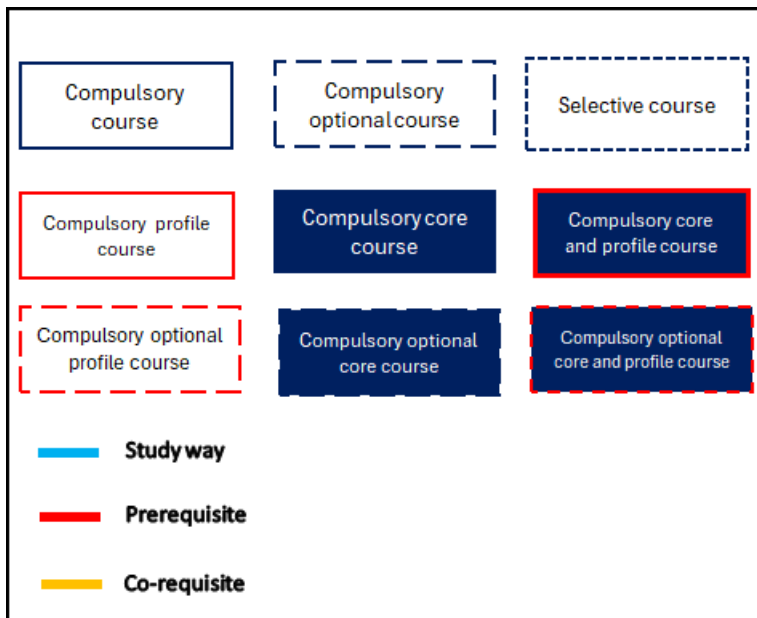




Diagram of Interconnections (Paths) of Individual Study Courses in the Study Program

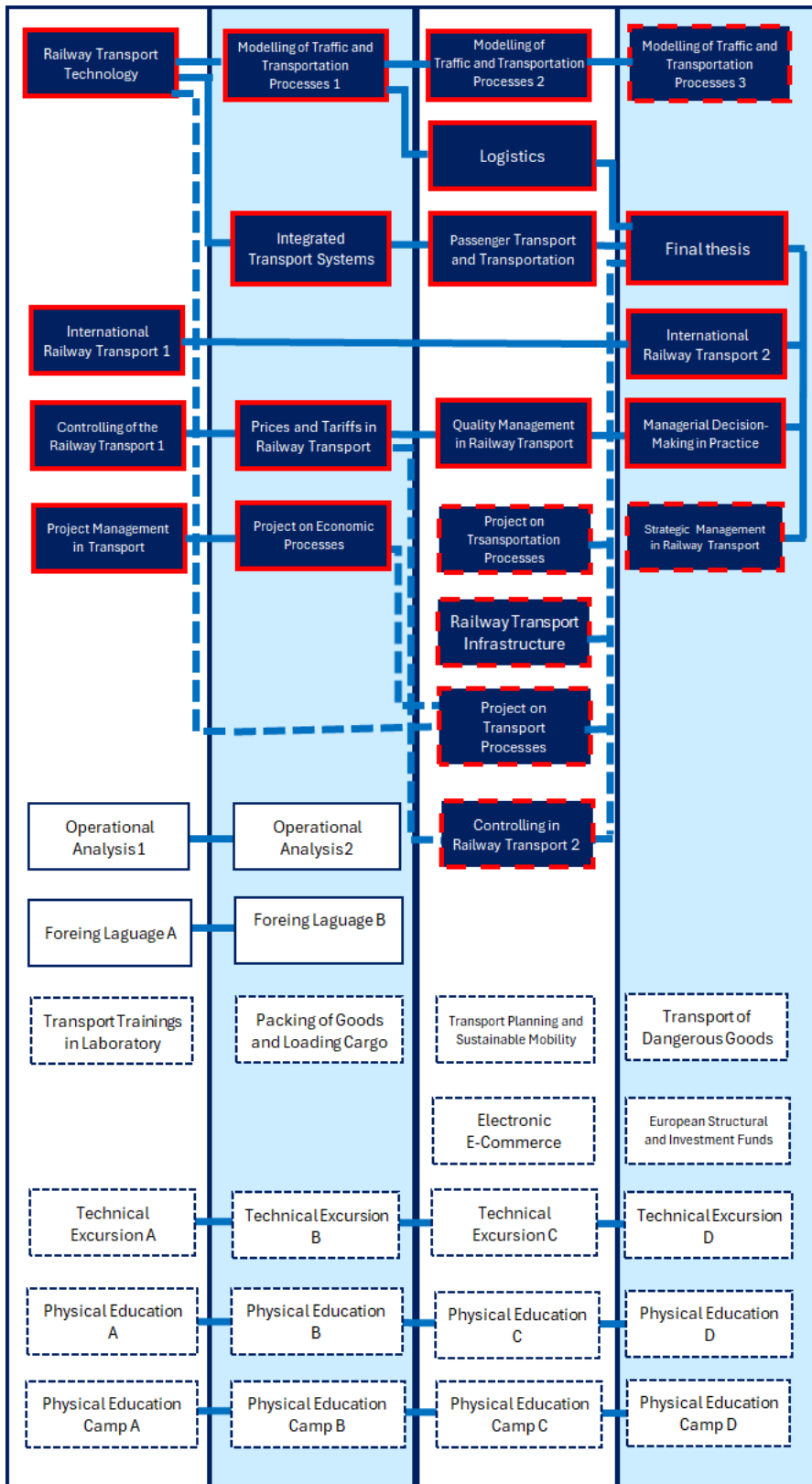
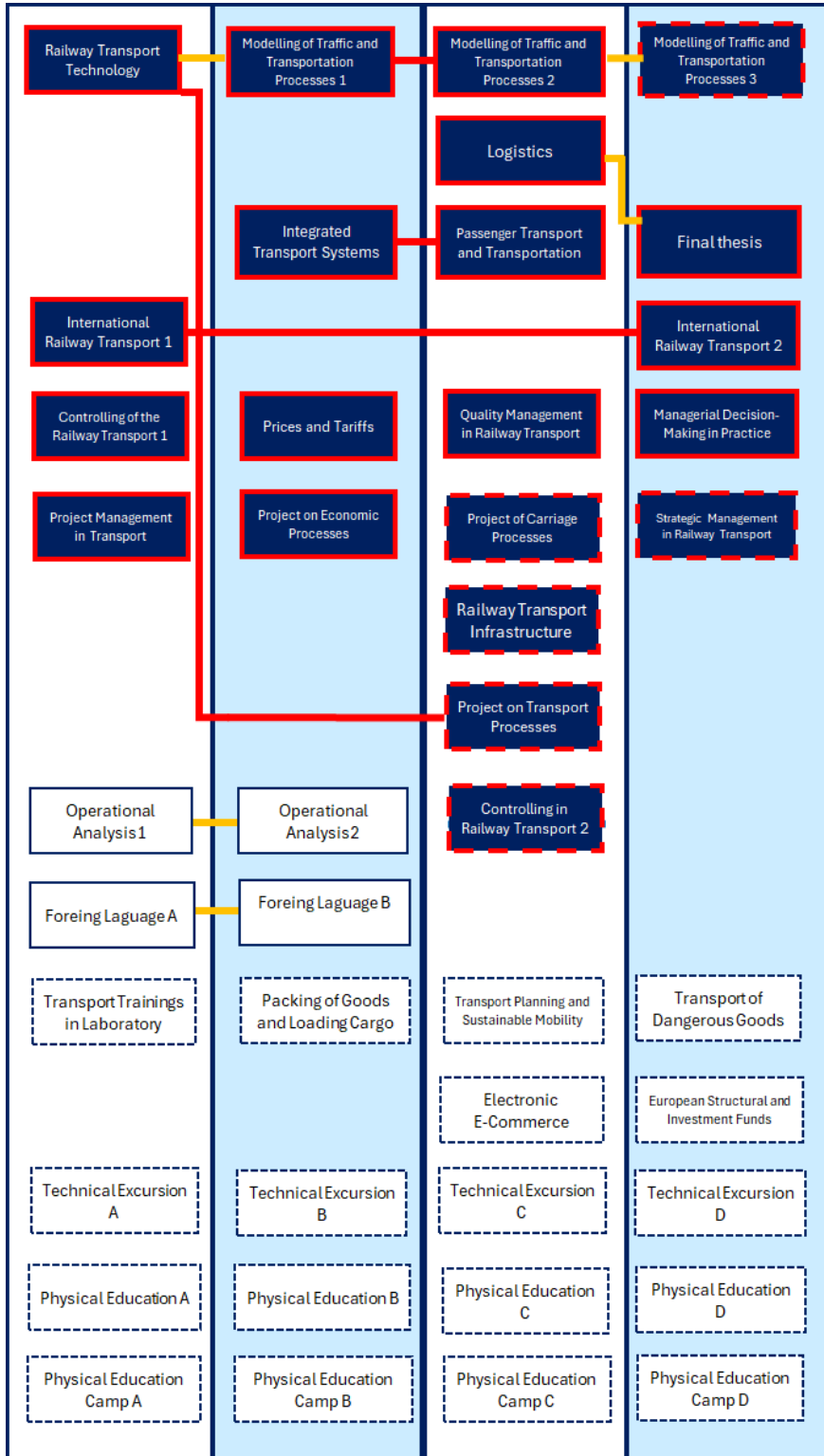




Diagram of Prerequisites and Co-requisites in the Study Program:



c

The study programme, in the structure of compulsory, compulsory optional and optional courses
Profile courses of the relevant study path (specialization) within the study programme



	Annex 1			
d	Number of credits, the achievement of which is a condition for proper completion of studies			
	120			
	<p>Other requirements that the student must meet within the study programme and for its proper completion, including the requirements for state examinations, rules for re-study and rules for the extension, interruption of study</p> <p>The conditions that students must fulfil for individual study courses are specified in the attached course information sheets. The conditions for proper completion of studies, including the requirements for state exams, rules for repeating studies, and rules for extending or interrupting studies, are published in Directive No. 209 - Study Regulations for the 1st and 2nd Levels of Higher Education at the University of Žilina, available at: https://www.fpedas.uniza.sk/images/uradna_tabula/smernica_209_2021.pdf</p> <p>Specifically, the conditions include:</p> <p><u>Conditions During Studies:</u> The conditions that students must fulfill during their studies, including adhering to their study plan, earning credits, and enrolling in the next academic year, are specified in the course information sheets under the section "Conditions for Completing the Course" and in Directive No. 209:</p> <ul style="list-style-type: none"> - Article 9: Verification of Acquired Knowledge, Skills, and Competencies in a Course; Assessment of Study Results. - Article 12: "Completion of the Academic Year." - Article 13: "Enrollment in the Next Academic Year." <p><u>Conditions for Proper Completion of Studies:</u> These are outlined in Directive No. 209:</p> <ul style="list-style-type: none"> - Article 8: Enrollment and Completion of Courses. - Article 16: "Proper Completion of Studies." - Article 19: State Examinations. - Article 22: "Conduct of State Examinations." <p><u>Rules for Repeating Studies:</u></p> <p>These are specified in Directive No. 209:</p> <ul style="list-style-type: none"> - Article 12, paragraphs 2 and 4. - Article 13, paragraphs 9 and 10. - Article 23: "Repeated and Substitute State Examination Dates." <p><u>Rules for Extension:</u></p> <p>These are outlined in Directive No. 209:</p> <ul style="list-style-type: none"> - Article 2, paragraphs 11 and 12. - Article 13, paragraph 13. <p><u>Special Conditions for Students with Specific Needs:</u></p> <p>In each phase of the study cycle, the rules are appropriately implemented to accommodate students with specific needs, including:</p> <ul style="list-style-type: none"> - Admission Process Conditions: Directive No. 209, Article 5, paragraph 5. - Permission for an Individual Study Plan: Directive No. 209, Article 3, paragraph 9. - Overall Study Conditions: Directive No. 209, Article 11, paragraph 27. <p>Students with specific needs have access to the UNIZA Counseling and Career Center. At FPEDAS UNIZA, the coordinator for students with specific needs is Assoc. Prof. Ing. Eva Nedeliaková, PhD. Email: eva.nedeliakova@fpedas.uniza.sk</p>			
e	For individual study plans, the institution states the requirements for completing the individual parts of the study programme and the student's progress within the study programme in the given structure			
	Proper completion of studies	Part of studies		
		1Y	2Y	3Y
number of credits for compulsory courses required for proper completion of studies/completion of a part of studies				



number of credits for compulsory optional courses required for the proper completion of studies/completion of a part of studies,		60	45		
number of credits for optional courses required for the proper completion of studies/completion of a part of studies		0	15		
number of credits required for the completion of studies/completion of a part of the studies for the common foundations and for the relevant specialization, in the case of a teaching combination study programme or a translation combination study programme		0	0		
number of credits for the final thesis and the defense of the final thesis required for the proper completion of studies		Not applicable	Not applicable		
number of credits for professional practice required for the proper completion of studies/completion of a part of studies		15			
number of credits required for the proper completion of studies/completion of a part of the studies for project work with the indication of relevant courses in engineering study programmes		Project Management in Transport: 5.0, or Project on Transport Processes / Project on Logistics Processes: 6.0			
number of credits required for the proper completion of studies/completion of a part of the studies for artistic performances in addition to the final thesis in art study programmes		Not applicable			
Rules for the verification of learning outcomes, students' assessment and the possibilities of appealing against the assessment					
Rules for Verifying Learning Outcomes and Assessing Students The rules for verifying learning outcomes and assessing students, along with the possibilities for appeal, are outlined in Directive No. 209 – Study Regulations for the 1st and 2nd Levels of Higher Education at UNIZA (Directive No. 209).					
<ul style="list-style-type: none">• Rules for verifying learning outcomes and assessing students: Directive No. 209, Article 9.• Options for appeals against assessments: Directive No. 209, Article 10.					
Rules for Access to Remedies for Railway Transport Students:					
<ol style="list-style-type: none">1. A student has the right to reject interim assessments and exam grades, except for an "FX – insufficient." Rejecting an exam grade results in an "FX," and the next exam attempt will be considered a retake, provided the student is eligible for another attempt. The grade is recorded in the AIVS UNIZA system, with only the latest grade visible in the electronic transcript.2. If a student receives an "FX – insufficient" grade on an exam, they may retake the exam up to two times (including a committee exam).					



3. If a student fails a compulsory course ("FX") in the second retake during the first enrollment, they must re-enroll in the course. If they fail again on the second retake after re-enrollment, they are expelled from the program.
4. A student may request an explanation of their final assessment in writing within one working day of its publication in the AIVS system. Requests can be submitted electronically via email from the student's official university email address.
5. Instructors must, within three working days, provide the results of a written exam (if using the university's educational platform) or schedule an oral consultation during office hours to review the assessed work.
6. If a student does not pass the exam on the first retake, they may request further clarification under Articles 1 and 2. If they disagree with the assessment, they may request the presence of the Vice Dean for Education or, for university-wide programs, the Institute Director.
7. If a student fails the second retake, the exam is conducted in the presence of two examiners, provided the situation and capacity allow.
8. If a student fails a course already re-enrolled for the second time (transferred obligation) and does not pass the first retake, the second retake is conducted in the presence of two examiners.
9. A committee exam can only be requested if UNIZA's internal regulations were violated during the assessment process. The course guarantor determines the conditions for the committee exam.
10. Members of the committee for a committee exam are appointed by the Vice Dean for Education in collaboration with the course guarantor for faculty programs, or by the Vice Rector for Education for university-wide programs.
11. A student can also request clarification of interim assessments during the semester. If the instructor's explanation is unsatisfactory, the student may seek the opinion of the Vice Dean or Vice Rector for Education, who will provide feedback in collaboration with the program guarantor within 15 calendar days.

f Conditions for the recognition of studies or a part of studies

The conditions for recognizing studies or parts of studies are outlined in Directive No. 209 – Study Regulations for the 1st and 2nd Levels of Higher Education, Articles 15 and 7 (Directive No. 209) https://www.fpedas.uniza.sk/images/uradna_tabula/smernica_209_2021.pdf

For international mobilities, the conditions are specified in Directive No. 219 – Mobility of Students and Staff of the University of Žilina Abroad [Directive No. 19] <https://uniza.sk/index.php/univerzita/vseobecne-informacie/vnutorny-system-kvality>

Conditions for Recognizing Studies or Parts of Studies (Excluding International Mobility):

1. A change of study program within the same field of study at the faculty or university-wide programs at UNIZA may be granted to a student from the same or another faculty of UNIZA or a student transferring from another university, based on their written request. The Dean/Rector decides on the request, considering the faculty's capacity and the written opinion of the guarantor of the new program, who evaluates the applicant's prior study progress. The change is usually implemented before the start of the semester.
2. For students who change their study program under paragraph 1, credits earned in the previous program within the past three years are recognized in the new program, provided their relevance to the new program is approved by the program guarantor.
3. The guarantor of the new study program may assign differential exams and set deadlines if the student has not completed all courses required by the study plan.
4. A change of study program to a different field of study requires a new admission process. In the new program, fulfilled obligations from the previous program will be recognized in accordance with ECTS.
5. According to § 59 of the Higher Education Act, a student can request enrollment in a study program within the same field of study at another faculty or university during their studies.

Conditions for Recognizing Studies or Parts of Studies in International Mobility:



	<p>1. A student may complete part of their studies based on an approved study plan at another faculty or outside UNIZA (for university-wide programs). The Dean/Rector approves the study plan.</p> <p>2. Completion of part of the studies at another university requires:</p> <ul style="list-style-type: none">- Application for exchange studies and confirmation of acceptance by the partner institution (international mobility or internship).- Agreement between partner institutions regarding the study program (e.g., collaboration between UNIZA and another partner institution offering an accredited program in the same or similar field of study).- Agreement on a joint study program accredited as a joint program under UNIZA's quality assurance system.- Transcript of study results for the completed courses. <p>3. For student mobility, as well as studies under point 2(b) and 2(c), the Faculty Coordinator for Mobility is the Vice Dean for Development and International Relations:</p> <p>Assoc. Prof. Ing. Martin Bugaj, PhD., Email: martin.bugaj@uniza.sk.</p> <p>4. Courses completed at the host institution are recognized by the Vice Dean for Education at the faculty or the Vice Dean for Development and International Relations for courses completed abroad. The student must submit a request including a transcript of study results issued by the host university at the end of the study period, as well as course syllabi or descriptions. The course grade and date of evaluation are recorded in AIVS. The request and accompanying documentation become part of the student's personal academic record maintained by the Education Office.</p>
g	<p>Topics of final theses of the study programme (or a link to the list)</p> <p>The topics of final theses for the 2nd cycle of study in the Railway Transport study program are listed in the Annual Reports on the Activities of the Faculty of Operation and Economics of Transport and Communications at UNIZA, in Chapter 5 of each report.</p> <p style="text-align: center;">Annual Report on the Activities of FPEDAS for 2022 Annual Report on the Activities of FPEDAS for 2021 Annual Report on the Activities of FPEDAS for 2020 Annual Report on the Activities of FPEDAS for 2019 Annual Report on the Activities of FPEDAS for 2018 Annual Report on the Activities of FPEDAS for 2017</p>
h ; 7.e-f	<p>Rules for the assignment, processing, opposition, defence and evaluation of final theses in the study programme; list of the supervisors of final theses with the assignment to topics (indicating the contact details)</p> <ol style="list-style-type: none">1. The rules for assigning, processing, opposing, defending, and evaluating final theses at both the faculty and university levels are outlined in Directive No. 209 – Study Regulations for the 1st and 2nd Levels of Higher Education at UNIZA, Articles 18-23 (Directive No. 209).2. Faculty-Level Rules for Assigning, Processing, and Opposing Final Theses:3. The final thesis assesses the knowledge, skills, and competencies acquired by the student during their studies, as well as their ability to apply them to solving tasks and specific problems related to their field of study.4. The final thesis and its defense form part of the state examination and are awarded 10 credits.5. The topic of the final thesis must be related to the content of the student's studies, the study program, and the field of study. It should stem from the scientific research activities of the department, faculty, university, and the needs of practice.6. In the bachelor's study program in Railway Transport, the final thesis is the bachelor's thesis.7. The student selects a topic for their final thesis from those published by the department responsible for the Railway Transport study program by the deadline set in the faculty's academic calendar. After this date, a topic will be assigned to the student.



8. Students may propose their own thesis topic by the deadline specified in the faculty's academic calendar. The topic must meet the requirements outlined in points 3 and 4 of this section.
9. The department responsible for the Railway Transport study program provides the student with the final thesis assignment no later than the end of October in the winter semester of their final year of study.
10. The thesis supervisor refines the topic, scope, and recommended resources, guides the student during the thesis preparation, evaluates the thesis, and comments on its originality in a written review. Details are provided in Directive No. 215 on Final, Rigorous, and Habilitation Theses (Directive No. 215).
11. The head of the department assigning the thesis topic appoints an opponent (and, if necessary, a consultant) for each final thesis. These individuals are selected from professors, associate professors, assistant professors in the field of study, researchers outside UNIZA, and qualified industry professionals. For bachelor's theses, doctoral students may also act as opponents. The opponent evaluates and classifies the thesis in their written review.
12. The principles for preparing final theses, formal requirements, and originality checks are based on the valid **Methodological Guidance of the Ministry of Education, Science, Research, and Sport of the Slovak Republic** regarding the requirements for final theses, their bibliographic registration, storage, and accessibility.
13. For bachelor's theses, the solution must include a thorough analysis of the studied issue within the field, its evaluation, a proposed solution, and recommendations. The student must demonstrate, through the preparation of the thesis, that they can apply their knowledge and have the competencies to solve problems in their field of study. They must also be able to gather and interpret relevant data and make ethically and socially responsible decisions.
14. For master's theses, the solution must include a high-quality analysis of the studied issue, preparation of alternative solutions supported by the analysis, evaluation of the proposals, and justification of specific recommendations or, in technical fields, the preparation of a recommended solution. The student must demonstrate, through the preparation of the thesis, the ability to creatively solve problems in new or unfamiliar environments and broader contexts beyond their field of study. They must also show the ability to integrate knowledge and make decisions.
15. In accordance with the Higher Education Act, the student must upload their final thesis in electronic form to the **Central Register of Theses, Rigorous, and Habilitation Theses (CRZP)**, where its originality will be checked. Details are outlined in **Directive No. 215 on Final, Rigorous, and Habilitation Theses** (Directive No. 215).
16. The student must submit the final thesis by the deadline specified in the faculty's academic calendar (Academic Calendar).

Rules for Organizing and Conducting State Examinations at the Faculty

State Examinations

1. State examinations verify whether the student has acquired the knowledge and skills required by the study plan and whether they are prepared for their profession. Studies in the bachelor's study program in Railway Transport conclude with a state examination.
2. State examinations are conducted in accordance with the provisions of the Higher Education Act. The state examination in the Railway Transport study program, as well as in all bachelor's and master's study programs at the faculty, consists of a final thesis and its defense.
3. A student may take the state examination only after fulfilling all other academic obligations prescribed by the study program.
4. A student may repeat the state examination, or any of its components (e.g., the final thesis), up to a maximum of two times, and only within the maximum allowable duration of study, which is equal to the standard length of the study program plus two additional years.
5. The organization of state examinations in the study program is managed by the department responsible for the Railway Transport study program in collaboration with the Education Office. Specific details are provided by the faculty through methodological guidelines, which are published on the faculty's website in the **INTRANET** section. These guidelines are directed at academic advisors for each study program, who also communicate them to students with explanations.
6. The student must complete the state examination (including any retakes) within the maximum allowable duration of study, which is equal to the standard length of the study program plus two additional years.

Examination Committee



1. The state examination is conducted by the student in a single session before the Examination Committee. The committee consists of a chairperson and at least three additional members. The committee is appointed by the dean.
2. Only university teachers in the positions of professors and associate professors, as well as other experts approved by the faculty's Scientific Council in accordance with the Higher Education Act, are authorized to examine at the state examination. For bachelor's study programs, assistant professors with a third-level university education may also examine. Examination committees may also include distinguished experts in the study field from other universities, legal entities conducting research and development in Slovakia, or from industry. Additionally, notable experts in related fields from abroad, approved by the faculty's Scientific Council, can also participate.
3. For master's study programs, at least two members of the committee must be university teachers in the positions of professor or associate professor. For bachelor's study programs, at least one member of the committee must hold the position of professor or associate professor.

Preparation for State Examinations

1. State examinations are held on dates specified in the faculty's **academic calendar**: Academic Calendar.
2. The head of the department responsible for the Railway Transport study program ensures that the student can review the supervisor's and opponent's evaluations of the final thesis by the date specified in the academic calendar, but no later than three days before the defense.
3. The student registers for the state examination at the department by the deadline set in the faculty's academic calendar.
4. The department publishes the schedule of state examinations at least one week before the start of the examinations.

Process of State Examinations

1. State examinations are public.
2. The examination process is directed by the chairperson of the examination committee, who is responsible for the committee's activities.
3. State examinations are conducted in the presence of the chairperson and at least three additional members of the examination committee.
4. During the defense of the final thesis, the student presents the results achieved in the thesis, comments on the reviews of the thesis supervisor and opponent, and answers questions related to the thesis. The thesis supervisor and opponent usually participate in the defense; however, their presence is not a mandatory condition for conducting the state examination.
5. The examination committee determines the result of the state examination and the overall outcome of the studies.
6. Credits are allocated for the state examination. For the defense of the final thesis in the Railway Transport study program, the number of credits is 10, as outlined in the study plan.
7. When grading, the committee also considers the student's academic performance throughout the entire university study period.
8. The result of the state examination is classified verbally using the following grades, in accordance with the internal regulations of the faculty/institute: "Excellent", "Insufficient", or "Passed" (in all other cases).
9. The overall study result is classified verbally as follows: "Passed with distinction" – if the student achieves "Excellent" in the state examination and meets the following grade average: For the 1st cycle of study: a maximum weighted grade average of 1.3 (or 1.4 if the student completed at least one semester abroad).
10. For the 2nd cycle of study: a maximum weighted grade average of 1.2 (or 1.4 if the student completed at least one semester abroad). "Failed" – if the state examination is classified as "Insufficient." "Passed" – in all other cases.
11. The classification of the state examination and the overall result of the study program are decided by the committee through a vote during a closed session on the day of the examination. In the event of a tie, the chairperson's vote prevails. The chairperson announces the result of the thesis defense, the state examination, and the overall study outcome to the student on the day of the state examination.
12. A written record of the state examination is prepared for each student, signed by the chairperson and the attending committee members.
13. The grade for the thesis defense is recorded in the student's electronic study record in AIVS by the chairperson of the committee or a secretary designated by the chairperson.



14. If a student does not attend the state examination (regular or rescheduled) and fails to submit a written excuse within 5 calendar days, they are graded as "Insufficient."

Repeated and Alternative State Examination Terms

1. A student graded "**FX – Insufficient**" in a state examination may retake the exam a maximum of **two times**. The State Examination Committee will record in the examination protocol one of the following measures:
 - a) Revision of the final thesis,
 - b) Change of the final thesis topic,
 - c) Repeating the examination course, or
 - d) A combination of a) and c, or b) and c.
2. A student graded "**FX – Insufficient**" in a state examination may register for the next examination term no earlier than the next available term as specified in the faculty's academic calendar or by the dean of the faculty. The retake must not occur sooner than **two months** after the unsuccessful regular or first retake attempt.
3. If the state examination term is determined by the dean of the faculty, the term must be announced through the head of the department at least **30 calendar days** prior to the examination date.
4. A student graded "**FX – Insufficient**" on the second retake will be excluded from the study program by the dean of the faculty for failure to meet the requirements of the study program and university/faculty regulations under **Section 66(1)(c) of the Higher Education Act**. The date the decision becomes final is considered the date the study program ends.
5. A student who fails to appear at the state examination or its retake without a valid excuse submitted **within 5 calendar days** of the scheduled term will have a substitute examination term assigned by the dean of the faculty. The dean will notify the student of the new term through the head of the department, ensuring a minimum notice of **30 calendar days** before the examination.
6. A student postponing or repeating state examinations must register for the next available term. If no terms are available in the current academic year, the student must enroll for the next academic year and pay tuition. Until the state examinations are completed, the student may also **interrupt their studies**.

The complete documentation is stored at the **Education Office of FPEDAS UNIZA** (available for on-site inspection) and includes:

- Records of the **study progress** and state examination results.
- Records of the **student's life cycle** – student file.
- Records of **study completion**, issuance, and delivery of graduation documents – the **Graduate Register**.
- Records of **non-regular study terminations**, such as withdrawals or interruptions of studies.

i Opportunities and procedures for participation in student mobility

At the university level, these procedures are specified in the following directives:

- **Directive No. 219 – Mobility of Students and Staff of the University of Žilina Abroad, Article 2:** [Directive UNIZA No. 219 \(PDF\)](#).
- **Directive No. 209 – Study Regulations for the 1st and 2nd Levels of Higher Education at UNIZA, Article 7:** [Directive UNIZA No. 209 \(PDF\)](#).

Student Mobility Opportunities and Procedures within the Road Transport Study Program

1. The study program allows students to pursue part of their education at domestic or international academic institutions, with recognition of results achieved at these institutions. All necessary documents are available on the websites of **UNIZA** and **FPEDAS**:
 - [Information for Students on Studying Abroad](#)
 - [Erasmus Mobility Information](#)
2. Completing part of the study program at another university is course to:
 - A **completed application** for exchange studies and confirmation of acceptance by the partner institution (for international mobility or internships),
 - An **agreement** between the partner institutions regarding the study (if UNIZA collaborates with a partner institution offering an accredited program in the same or similar field of study, with a certified/accredited internal quality assurance system, or in compliance with ESG 2015),



- An **agreement** on a joint study program between the partner institutions, accredited as a joint study program in line with UNIZA's internal quality assurance system,
- A **transcript of study results** from the partner institution in cases (a) to (c) above.
- 3. To facilitate student mobility and coordinate study opportunities for faculty programs, the **faculty coordinator** is the Vice-Dean for Development and International Relations.
- 4. The coordinator's responsibilities include organizing partnerships (primarily international), addressing issues related to sending and receiving students, and providing counseling services on study opportunities.
- 5. For studies at another university in Slovakia or abroad, a **study agreement** is concluded between the student, the relevant UNIZA faculty or UNIZA, and the host institution. This agreement must comply with the Slovak Ministry of Education's decree on the credit system of studies. The agreement is signed before the student begins studies at the host institution.
- 6. Courses completed at the host institution are recognized by the Vice-Dean for Education at the faculty or, in the case of international studies, by the Vice-Dean for Development and International Relations. This is based on the student's application, which must include a transcript of results from the host institution, as well as course information sheets or syllabi. Grades are recorded in the **AIVS system**, and the application and related documents are archived as part of the student's academic records in the Education Office.
- 7. For successful completion of:
 - A **bachelor's program**, a minimum of **180 credits** is required (or 240 credits for a four-year program).
 - An **engineering program**, **120 credits** are required.
- 8. Credits earned from successfully completed courses can be counted toward the total credit requirement within **3 years** of completing the course.

Responsible Persons:

- Prof. Ing. Jozef Gašparík, PhD., MBA – Study Program Guarantor
(jozef.gasparik@fpedas.uniza.sk)
- Doc. Ing. Katarína Valášková, PhD. – Vice-Dean for Education
(katarina.valaskova@fpedas.uniza.sk)

At FPEDAS, the following staff members are designated to provide consultations regarding student mobility:

- Doc. Ing. Martin Bugaj, PhD. – Faculty Coordinator for Erasmus+
 - Phone: +421/41/513 34 56 ; Email: martin.bugaj@fpedas.uniza.sk
- Ing. Vladimír Šalaga, PhD. – Mobility Coordinator at FPEDAS
 - Phone: +421/41/513 30 62; Email: vladimir.salaga@fpedas.uniza.sk

Rules for adherence to academic ethics and rules for drawing consequences

Students enrolled in the Railway Transport Study Program are guided to adhere to the principles of academic ethics as part of their education. UNIZA has formalized the Code of Ethics for employees through Directive No. 207: Code of Ethics of the University of Žilina in Žilina:

- Principles for UNIZA students are outlined in Article 7 of Directive No. 207. This directive specifies the fundamental moral and ethical requirements for the academic community and other university employees, in compliance with the Constitution of the Slovak Republic, Act No. 131/2002 on Higher Education, as amended, the Statute of the University, and other regulations.
- Any violation of academic ethics and subsequent actions are addressed by the university's Ethics Committee, appointed by the Rector.
- Regarding adherence to the Code of Ethics, every member of the academic community and university employee has the right to submit a motion to the Chairperson of the Ethics Committee.
- A motion regarding the violation of the Code of Ethics can be submitted by any UNIZA employee, faculty member, UNIZA student, or any other individual aware of conduct by a student or UNIZA employee that could constitute a breach of the Code of Ethics. This is done by submitting the motion to the Chairperson of the Ethics Committee.
- The Ethics Committee's statement in the event of a confirmed breach of the Code of Ethics will include recommendations or proposals for remedial actions for further steps by relevant decision-making authorities,



such as the Rector, Dean, or other heads of UNIZA entities, in accordance with the Organizational Rules of UNIZA.

The outcome of the Ethics Committee's proceedings may also include a recommendation for action in accordance with § 108f and subsequent provisions of Act No. 131/2002 on Higher Education, as amended, such as the annulment of the state examination or its part by the university's Rector.

- Student misconduct against the principles of academic ethics or violations of the rules outlined in Article 7 of Directive No. 207—such as plagiarism in theses or seminar papers, use of unauthorized methods during exams, etc.—can lead to academic evaluation with a grade of “FX” (fail) or disciplinary action in line with Directive No. 201: Disciplinary Code for Students of the University of Žilina in Žilina. This directive defines a “disciplinary offense” as an intentional violation of legal regulations, internal UNIZA regulations or those of its components, or public order. It also specifies the actions constituting disciplinary offenses (Directive No. 201, Article 2).

The rules for upholding academic ethics and enforcing consequences at UNIZA are governed by the following:

- Directive 207 – Code of Ethics of the University of Žilina
[Link to Directive 207](#)
- Directive 201 – Disciplinary Rules for Students of the University of Žilina
[Link to Directive 201](#)
- Disciplinary Committee of FPEDAS
[Link to FPEDAS Disciplinary Committee](#)
- Directive 215 on Final, Rigor, and Habilitation Theses at the University of Žilina
[Link to Directive 215](#)
- Directive 226 on Authorial Ethics and the Elimination of Plagiarism at the University of Žilina
[Link to Directive 226](#)

Procedures applicable to students with special needs

At the university level, these procedures are defined by Directive No. 198 on Support for Applicants and Students with Specific Needs at the University of Žilina and Directive No. 209, the Study Regulations for the 1st and 2nd Levels of Higher Education at UNIZA.

UNIZA and the faculty provide individualized support and create suitable conditions for students with specific needs within the study program.

Throughout the various stages of the study cycle, study rules are appropriately applied to accommodate the conditions of students with specific needs, particularly regarding:

- Admission conditions (*Directive No. 209, Article 5, Paragraph 5*),
- The possibility of granting an individual study plan (*Directive No. 209, Article 3, Paragraph 9*), and
- General study conditions (*Directive No. 209, Article 11, Paragraph 27*).

The procedures applicable to students with specific needs in the study program are as follows:

- Individual Study Plan (ISP): The dean may allow students with specific needs or serious health problems to study under an ISP within faculty-managed programs.
 - The ISP is prepared by the student in collaboration with the program guarantor and is approved by the dean or vice-dean for education in coordination with the program guarantor.
 - The conditions for studying under the ISP must be agreed upon with instructors, ideally during the first week of the relevant semester. The ISP must enable students to acquire the same knowledge as the standard study plan while using alternative forms and methods of instruction.
- Admissions for Applicants with Specific Needs:
 - If an applicant with specific needs is required to take an entrance exam, the form and execution of the exam will be determined based on the applicant's specific needs and in accordance with Directive No. 198 (*Support for Applicants and Students with Specific Needs at the University of Žilina*). This decision will be made by the dean or vice-dean for education upon the applicant's request.



- Individual Organization of Studies:
 - In justified cases, the dean may allow an individualized study arrangement for students with specific needs or from socially disadvantaged backgrounds, as per Directive No. 198.
- Registration as a Student with Specific Needs:
 - Students can apply to be registered as students with specific needs if they consent to an evaluation of their specific needs. The application should be submitted at the beginning of the academic year to the respective faculty coordinator.
 - The application must include relevant documents, such as:
 1. A medical certificate (no older than three months) that may include a medical report, progress report, or an excerpt from medical records; or
 2. An evaluation from a psychologist, speech therapist, school psychologist, school speech therapist, or special education professional.
- Granting of Status as a Student with Specific Needs:
 - Based on the recommendation of the committee for evaluating specific needs, the dean issues a decision granting the student this status for the entire duration of the program. This document serves as proof in communications with faculty and university staff.
 - In certain cases, status may be granted for one academic year for students with specific needs who are expected to see an improvement in their condition.
- Support Services and Adjustments:
 - Students with specific needs are entitled to support services under § 100 (4) of the *Higher Education Act*. These adjustments and services are established for the entire duration of the study program.

Students can familiarize themselves with their rights, information on support services, and necessary forms on the university and faculty websites: [Students with Specific Needs](#)

Students with specific needs also have access to the Counseling and Career Center UNIZA, as well as psychological counseling: [Counseling and Career Center UNIZA](#)

At FPEDAS UNIZA, the coordinator for students with specific needs is:
Assoc. Prof. Eva Nedeliaková, PhD.; Email: eva.nedeliakova@fpedas.uniza.sk; Phone: +421 41 513 3409

Procedures for filing complaints and appeals by students

At the university level, these procedures are defined in Directive No. 209: Study Regulations for the 1st and 2nd Degree of Higher Education at UNIZA, Article 10.

Students enrolled in the respective study program have sufficient mechanisms for addressing their concerns and submitting feedback:

- Anonymous feedback box: Students can submit anonymous suggestions.
- Submitting suggestions via representatives: Feedback can be submitted to their representatives in the FPEDAS Academic Senate, the Department of Education, the Education Secretary, the Head of Department, the Vice Dean for Education, or the Dean. The Dean addresses all feedback, whether submitted anonymously or not.
- Dean's meetings: Students can express their concerns and suggestions during meetings with the Dean, regularly organized by the student representatives of the FPEDAS Academic Senate. These meetings are announced via the faculty's Facebook page or website: [FPEDAS Notices](#).
- Quality research feedback: Students can provide feedback as part of quality research conducted on the faculty using the MS Teams application after each semester's teaching period. This includes anonymous evaluations of instructors' approaches and the quality of teaching on a scale of 1–5, along with optional comments.
- Program Council representation: Students can also direct their suggestions to their representative on the Program Council for the Road Transport study program.

The examination of student feedback is conducted transparently and includes the participation of student representatives.

- Directive No. 209: Study Regulations for the 1st and 2nd Degree of Higher Education at the University of Žilina: [02092021_S-209-2021-Study-Regulations-for-1st-and-2nd-Degree.pdf](#).
- On an informal level, students can participate in meetings with the faculty leadership. Information is available at: [Coffee with the Dean](#).
- Results of teaching quality research and instructor approach: [Quality of Education](#).



5. Course information sheets of the study programme (In the structure according to Decree no. 614/2002 Coll)

Course information sheets are available at: <https://akreditacia.uniza.sk/forms.php?id=2> in the "Study Plans" section, where clicking on a specific course reveals the relevant study program. They are also listed under the titles of individual courses in the following list:
Compulsory Courses:

Roč.	Sem.	Kód	Predmet	Skratka	Rozsah	Ukonč.	Kredity	Profil	Jadro	Garant
1	Z	1I2M102	Operational Analysis 1	OA1	2 - 0 - 2	S	5	-	áno	RNDr. Oľga Blažeková, PhD.
1	Z	1I2P101	Foreign language A	FLA	0 - 2 - 0	H	3	-	-	Mgr. Katarína Smolková
1	Z	1I2Z101	International Railway Transport 1	IRT1	2 - 1 - 0	S	4	áno	áno	doc. Ing. Vladislav Zitrický, PhD.
1	Z	1I2Z102	Controlling in Railway Transport 1	CoRT1	3 - 0 - 3	S	7	áno	áno	prof. Ing. Anna Dolinayová, PhD.
1	Z	1I2Z103	Project Management in Transport	PMT	1 - 2 - 0	S	5	áno	áno	doc. Ing. Eva Nedeliaková, PhD.
1	Z	1I2Z104	Railway Transport Technology	RTT	2 - 2 - 0	S	6	áno	áno	prof. Ing. Jozef Gašparík, PhD., MBA
1	L	1I2M151	Operational Analysis 2	OA2	2 - 0 - 2	S	5	-	áno	RNDr. Oľga Blažeková, PhD.
1	L	1I2P151	Foreign language B	FLB	0 - 2 - 0	S	3	-	-	Mgr. Katarína Smolková
1	L	1I2Z151	Modelling of Traffic and Transportation Processes 1	MTTP 1	2 - 0 - 2	S	6	áno	áno	doc. Ing. Juraj Čamaj, PhD.
1	L	1I2Z152	Prices and Tariffs	PTRT	2 - 0 - 2	S	6	áno	áno	prof. Ing. Anna Dolinayová, PhD.
1	L	1I2Z153	Integrated Transport Systems	ITS	2 - 2 - 0	S	4	áno	áno	doc. Ing. Martin Kendra, PhD.
1	L	1I2Z154	Project on Economic Processes	PoEP	1 - 0 - 3	S	6	áno	áno	doc. Ing. Eva Brumerčíková, PhD.
2	Z	1I2V201	Logistics	Log	2 - 1 - 0	S	4	-	áno	doc. Ing. Andrej Dávid, PhD.
2	Z	1I2Z201	Passenger Transport and Transportation	PTT1	2 - 1 - 0	S	5	áno	-	doc. Ing. Martin Kendra, PhD.
2	Z	1I2Z202	Quality Management in Railway Transport	QMRT	2 - 0 - 2	S	5	áno	áno	doc. Ing. Eva Nedeliaková, PhD.
2	Z	1I2Z203	Modelling of Traffic and Transportation Processes 2	MTTP 2	1 - 0 - 4	S	5	áno	áno	doc. Ing. Juraj Čamaj, PhD.
2	L	1I2Z250	Final Thesis	FTING	0 - 2 - 0	S	15	áno	áno	doc. Ing. Jaroslav Mašek, PhD.
2	L	1I2Z251	International Railway Transport 2	IRT2	3 - 0 - 4	S	6	áno	áno	doc. Ing. Bibiána Buková, PhD.
2	L	1I2Z252	Managerial Decision-Making in Practice	MDMP	3 - 0 - 4	S	5	áno	áno	doc. Ing. Eva Nedeliaková, PhD.

Compulsory Elective Courses:



Year	SEM	CODE	Course	Nick	Scope	Completion	Credits	Profil	Core	Guarantor
2	Z	1I2Z204	Project on Transportation Processes	PTPr	1 - 0 - 2	H	6	áno	áno	prof. Ing. Anna Dolinayová, PhD.
2	Z	1I2Z205	Controlling in Railway Transport 2	CoRT2	2 - 0 - 2	S	5	áno	áno	prof. Ing. Anna Dolinayová, PhD.
2	Z	1I2Z206	Project on Transport Processes	PTTP	1 - 0 - 2	S	6	áno	áno	prof. Ing. Jozef Gašparík, PhD., MBA
2	Z	1I2Z207	Railway Transport Infrastructure	RTI	2 - 2 - 0	S	5	áno	áno	prof. Ing. Jozef Gašparík, PhD., MBA
2	L	1I2Z253	Strategic Management in Railway Transport	SMiRT	3 - 0 - 3	S	4	-	áno	doc. Ing. Eva Nedeliaková, PhD.
2	L	1I2Z254	Modelling of Transport and Transportation Processes 3	MTTP3	1 - 2 - 3	H	4	-	áno	doc. Ing. Jaroslav Mašek, PhD.
Elective Courses::										
Year	SEM	CODE	Course	Nick	Scope	Completion	Credits	Profil	Core	Guarantor
1	Z	1I2P001	Physical Education A	PhEduA	0 - 2 - 0	H	2	-	-	PaedDr. Marián Hrabovský, PhD.
1	Z	1I2P002	Physical Education Camp A	PhEdCA	0 - 1 - 0	S	1	-	-	PaedDr. Ľudmila Malachová
1	Z	1I2Z106	Transport Trainings in Laboratory	PTL	0 - 0 - 3	H	2	-	-	Ing. Pavol Meško, PhD.
1	Z	1I2Z107	Technical Excursion A	TeExA	0 - 1 - 0	H	2	-	-	doc. Ing. Martin Kendra, PhD.
1	L	1I2C155	Packing of Goods and Loading Cargo	PGLC	2 - 2 - 0	S	5	-	-	doc. Ing. Juraj Jagelčák, PhD.
1	L	1I2P003	Physical Education B	PhEduB	0 - 2 - 0	H	2	-	-	PaedDr. Marián Hrabovský, PhD.
1	L	1I2P004	Physical Education Camp B	PdEdB	0 - 1 - 0	H	1	-	-	PaedDr. Ľudmila Malachová
1	L	1I2Z156	Technical Excursion B	TeExB	0 - 1 - 0	H	2	-	-	doc. Ing. Martin Kendra, PhD.
2	Z	1I2C203	Transport Planning and Sustainable Mobility	TPaSM	2 - 2 - 0	S	5	-	-	doc. Ing. Marián Gogola, PhD.
2	Z	1I2P005	Physical Education C	PhEdC	0 - 2 - 0	H	2	-	-	PaedDr. Marián Hrabovský, PhD.
2	Z	1I2P006	Physical Education Camp C	PhEdCC	0 - 1 - 0	H	1	-	-	PaedDr. Ľudmila Malachová
2	Z	1I2S107	E-Commerce	Ecom	2 - 0 - 2	S	5	-	-	prof. Ing. Radovan Madleňák, PhD.
2	Z	1I2Z208	Technical Excursion C	TeExC	0 - 1 - 0	H	2	-	-	doc. Ing. Martin Kendra, PhD.
2	L	1I2C251	Transport of Dangerous Goods	TDG	4 - 0 - 3	S	5	-	-	doc. Ing. Juraj Jagelčák, PhD.
2	L	1I2E254	European Structural and Investment Funds	ESFS	2 - 0 - 2	S	3	-	-	prof. Ing. Pavol Král, PhD.
2	L	1I2P007	Physical Education D	TVD	0 - 2 - 0	H	2	-	-	PaedDr. Marián Hrabovský, PhD.



	2	L	1I2P008	Physical Education Camp D	TVSD	0 - 1 - 0	H	1	-	-	PaedDr. Ľudmila Malachová
	2	L	1I2Z256	Technical Excursion D	TeExD	0 - 1 - 0	H	2	-	-	doc. Ing. Martin Kendra, PhD.
Course Information Sheets:											

6.	Current academic year plan and current schedule	
	Current academic year plan	https://fpedas.uniza.sk/sk/studenti/vseobecne-informacie/akademicky-kalendar
	Current schedule	https://vzdelavanie.uniza.sk/vzdelavanie/rozvrh2.php

7.	Persons responsible for the study programme		
A	A person responsible for the delivery, development, and quality of the study programme (indicating the position and contact details)		
	Jozef Gašparík, prof. Ing., PhD., MBA function: Vice-Dean for Science and Research FPEDAS UNIZA contact (mail, tel.): gasparik@uniza.sk; 041/513 3430		
b – c	List of persons responsible for the profile courses of the study programme		
	Name, Surname, titles on the position of the associated professor or professor	Profile course name	Additional information
	doc. Ing. Bibiána Buková, PhD.	1I2Z251	International Railway Transport 2
	doc. Ing. Juraj Čamaj, PhD.	1I2Z151	Modelling of Traffic and Transportation Processes 1
	doc. Ing. Juraj Čamaj, PhD.	1I2Z203	Modelling of Traffic and Transportation Processes 2
	prof. Ing. Anna Dolinayová, PhD.	1I2Z102	Controlling in Railway Transport 1
	prof. Ing. Anna Dolinayová, PhD.	1I2Z152	Prices and Tariffs
	prof. Ing. Anna Dolinayová, PhD.	1I2Z204	Project on Transportation Processes
	prof. Ing. Anna Dolinayová, PhD.	1I2Z205	Controlling in Railway Transport 2
	prof. Ing. Jozef Gašparík, PhD., MBA	1I2Z104	Railway Transport Technology
	prof. Ing. Jozef Gašparík, PhD., MBA	1I2Z206	Project on Transport Processes
	prof. Ing. Jozef Gašparík, PhD., MBA	1I2Z207	Railway Transport Infrastructure
	doc. Ing. Martin Kendra, PhD.	1I2Z153	Integrated Transport Systems



	doc. Ing. Martin Kendra, PhD.	112Z201	Passenger Transport and Transportation	
	doc. Ing. Jaroslav Mašek, PhD.	112Z250	Final Thesis	
	doc. Ing. Eva Nedeliaková, PhD.	112Z103	Project Management in Transport	
	doc. Ing. Vladislav Zitrický, PhD.	112Z101	International Railway Transport 1	
D	List of teachers of the study programme (including doctoral students) with the assignment to the course			
	Name, Surname and titles	Profile course name	Organizational form provided by teacher	Additional information
	Meno, priezvisko a tituly učiteľa	Org.forma	Predmet	Názov
	Mgr. Gabriela Chalupianská	Exercises, Exercises	110P101	Foreign Language A
	Mgr. Gabriela Chalupianská	Exercises, Exercises	110P151	Foreign Language B
	RNDr. Oľga Blažeková, PhD.	Lab Exercises, Lectures, Lab Exercises	110M102	Operational Analysis 1
	RNDr. Oľga Blažeková, PhD.	Lab Exercises, Lab Exercises	110M151	Operational Analysis 2
	Mgr. Gabriela Böhmová, PhD.	Lab Exercises, Lab Exercises	110M102	Operational Analysis 1
	doc. Ing. Eva Brumerčíková, PhD.	Lectures, Lab Exercises	110Z154	Project on Economic Processes
	doc. Ing. Bibiána Buková, PhD.	Lectures, Lab Exercises	110Z251	International Railway Transport 2
	doc. Ing. Juraj Čamaj, PhD.	Lectures, lectures	110Z151	Transport and Transportation Processes Modeling 1
	doc. Ing. Juraj Čamaj, PhD.	Lectures, lab. exercises, lectures, lab. exercises	110Z203	Transport and Transportation Processes Modeling 2
	Ing. Lenka Černá, PhD.	Exercises, exercises	110Z101	International Railway Transport 1
	Ing. Lenka Černá, PhD.	Lab. exercises, lab. exercises	110Z102	Controlling in Railway Transport 1
	Ing. Lenka Černá, PhD.	Lab. exercises, lab. exercises	110Z152	Prices and Tariffs
	Ing. Mikuláš Černý	Exercises, exercises	110C203	Transport Planning and Sustainable Mobility
	doc. Ing. Andrej Dávid, PhD.	Lectures, lectures	110V201	Logistics
	prof. Ing. Anna Dolinayová, PhD.	Lectures, lectures	110Z102	Controlling in Railway Transport 1
	prof. Ing. Anna Dolinayová, PhD.	Lectures, lectures	110Z152	Prices and Tariffs
	prof. Ing. Anna Dolinayová, PhD.	Lectures, lab. exercises, lectures, lab. exercises	110Z204	Project on Transportation Processes
	prof. Ing. Anna Dolinayová, PhD.	Lectures, lab. exercises, lectures, lab. exercises	110Z205	Controlling in Railway Transport 2
	Ing. Igor Dömény, PhD.	Lab. exercises, lab. exercises	110Z203	Transport and Transportation Processes Modeling 2



RNDr. Marek Ďurica, PhD.	Lectures, lectures, lectures, lectures	110M102	Operational Analysis 1
RNDr. Marek Ďurica, PhD.	Lectures, lectures	110M151	Operational Analysis 2
Ing. Juraj Fabuš, PhD.	Lab. exercises, lab. exercises, lab. exercises, lab. exercises	110S107	E-commerce
prof. Ing. Jozef Gašparík, PhD., MBA	Lectures, lectures	110Z104	Railway Transport Technology
prof. Ing. Jozef Gašparík, PhD., MBA	Lectures, lectures	110Z206	Project on Traffic Processes
prof. Ing. Jozef Gašparík, PhD., MBA	Lectures, lectures	110Z207	Railway Transport Infrastructure
Mgr. Jana Gazdíková, PhD.	Lab. exercises, lab. exercises	110M102	Operational Analysis 1
Mgr. Jana Gazdíková, PhD.	Lab. exercises, lab. exercises	110M151	Operational Analysis 2
doc. Ing. Marián Gogola, PhD.	Lectures, lectures	110C203	Transport Planning and Sustainable Mobility
doc. Ing. Juraj Jagelčák, PhD.	Lectures, lectures	110C155	Goods Packaging and Loading
doc. Ing. Juraj Jagelčák, PhD.	Lectures, lectures	110C251	Transport of Dangerous Goods
PaedDr. Zuzana Kazániová	Exercises, exercises	110P001	Physical Education A
PaedDr. Zuzana Kazániová	Exercises, exercises	110P002	Physical Training Camp A
PaedDr. Zuzana Kazániová	Exercises, exercises	110P003	Physical Education B
PaedDr. Zuzana Kazániová	Exercises, exercises	110P004	Physical Training Camp B
PaedDr. Zuzana Kazániová	Exercises, exercises	110P005	Physical Education C
PaedDr. Zuzana Kazániová	Exercises, exercises	110P006	Physical Training Camp C
PaedDr. Zuzana Kazániová	Exercises, exercises	110P007	Physical Education D
PaedDr. Zuzana Kazániová	Exercises, exercises	110P008	Physical Training Camp D
doc. Ing. Martin Kendra, PhD.	Exercises, exercises	110Z107	Professional Excursion A
doc. Ing. Martin Kendra, PhD.	Lectures, exercises, lectures, exercises	110Z153	Integrated Transport Systems
doc. Ing. Martin Kendra, PhD.	Exercises, exercises	110Z156	Professional Excursion B
doc. Ing. Martin Kendra, PhD.	Lectures, exercises, lectures, exercises	110Z201	Passenger Transport and Transportation
doc. Ing. Martin Kendra, PhD.	Exercises, exercises	110Z208	Professional Excursion C
doc. Ing. Martin Kendra, PhD.	Exercises, exercises	110Z256	Professional Excursion D
doc. Ing. Vladimír Klapita, PhD.	Exercises, exercises	110V201	Logistics
prof. Ing. Pavol Kráľ, PhD.	Lectures, lab. exercises, lectures, lab. exercises	110E254	European Structural and Investment Funds
prof. Ing. Radovan Madleňák, PhD.	Lectures, lectures, lectures, lectures	110S107	E-commerce
doc. Ing. Jaroslav Mašek, PhD.	Exercises, exercises	110Z250	Final Thesis
doc. Ing. Jaroslav Mašek, PhD.	Lectures, lectures	110Z254	Transport and Transportation Processes Modeling 3
doc. Ing. Andrea Maternová, PhD.	Exercises, exercises	110V201	Logistics
Ing. Pavol Meško, PhD.	Lab. exercises, lab. exercises	110Z106	Practicum in Railway Laboratory
Ing. Pavol Meško, PhD.	Exercises, lab. exercises, exercises, lab. exercises	110Z254	Transport and Transportation Processes Modeling 3
doc. Ing. Eva Nedeliaková, PhD.	Lectures, exercises, lectures, exercises	110Z103	Project Management in Transport



	doc. Ing. Eva Nedeliaková, PhD.	Lectures, lab. exercises, lectures, lab. exercises	110Z202	Quality Management in Railway Transport
	doc. Ing. Eva Nedeliaková, PhD.	Lectures, lab. exercises, lectures, lab. exercises	110Z252	Managerial Decision-Making in Practice
	doc. Ing. Eva Nedeliaková, PhD.	Lectures, lab. exercises, lectures, lab. exercises	110Z253	Strategic Management in Railway Transport
	Mgr. Katarína Pankuchová, PhD.	Exercises, exercises	110P101	Foreign Language A
	Mgr. Katarína Pankuchová, PhD.	Exercises, exercises	110P151	Foreign Language B
	Ing. Lumír Pečený, PhD.	Lab. exercises, lab. exercises	110Z106	Practicum in Railway Laboratory
	Ing. Lumír Pečený, PhD.	Exercises, exercises	110Z207	Railway Transport Infrastructure
	Mgr. Silvia Poľaková, PhD.	Exercises, exercises	110P101	Foreign Language A
	Mgr. Silvia Poľaková, PhD.	Exercises, exercises	110P151	Foreign Language B
	Ing. Šimon Senko, PhD.	Lab. exercises, lab. exercises	110C155	Goods Packaging and Loading
	Mgr. Katarína Smolková	Exercises, exercises	110P101	Foreign Language A
	Mgr. Katarína Smolková	Exercises, exercises	110P151	Foreign Language B
	Ing. Natália Stalmašeková, PhD.	Lab. exercises, lab. exercises	110S107	E-commerce
	Ing. Lucia Šujanská	Lab. exercises, lab. exercises	110E254	European Structural and Investment Funds
	Ing. Michal Valla	Exercises, exercises	110Z104	Railway Transport Technology
	Ing. Michal Valla	Lab. exercises, lab. exercises	110Z206	Project on Traffic Processes
	RNDr. Mária Vojteková, PhD.	Lab. exercises, lab. exercises, lab. exercises, lab. exercises	110M102	Operational Analysis 1
	RNDr. Mária Vojteková, PhD.	Lab. exercises, lab. exercises	110M151	Operational Analysis 2
	doc. Ing. Vladislav Zitrický, PhD.	Lectures, lectures	110Z101	International Railway Transport 1
	doc. Ing. Vladislav Zitrický, PhD.	Exercises, exercises	110Z104	Railway Transport Technology
	Ing. PeEter Morihladko	Lab. exercises, lab. exercises	110Z151	Transport and Transportation Processes Modeling 1
	List of Thesis Supervisors with Assigned Topics:			
	Supervisor	Academic year	Job title	Graduate
G	Student representatives representing the interests of students of the study programme			
	Name, Surname and titles		Contact details	
	Bc. Martin Sklienka - Member of the Study Program Council for the 2 nd Degree Study Program in Railway Transport, Members of the Student Section of the Academic Senate of FPEDAS:		e-mail: sklienka@stud.uniza.sk	
	<ul style="list-style-type: none"> • Sofia Halasová • Ing. Marek Nagy • Robin Bednářik • Mária Sitárová • Petra Cáderová • Samuel Slezák • Sauli Alex Hakkarainen 		Akademický senát FPEDAS: https://fpedas.uniza.sk/sk/fakulta/vseobecne-informacie/organy-fakulty/akademicky-senat	
H	Study advisor of the study programme			



	<p>Jaroslav Mašek, doc. Ing. PhD.** Department of Railway Transport Contact (email, phone): jaroslav.masek@fpedas.uniza.sk; 041/513 3407 Study advisors do not have fixed consultation hours; they adjust to the students' needs to ensure consultations are accessible to all interested parties. The provided information is available at: https://fpedas.uniza.sk/sk/studenti/vseobecne-informacie/studijni-poradcovia</p>
I	<p>Other supporting staff of the study programme – assigned study officer, career counsellor, administration, accommodation department, etc.</p> <p>Name and Surname: Dagmar Brosová, Ing. Area of Responsibilities/Competencies: Study agenda – communication with students, enrollment, etc. Email: dagmar.brosova@fpedas.uniza.sk, studref@uniza.sk Phone: 041/513 4444</p> <p>The Railway Transport Study Program is supported by sufficient staff to meet the needs of students and teachers:</p> <ul style="list-style-type: none">• Other Study Administrators (mutually substitutable): studref@fpedas.uniza.sk• Head of the UNIZA Education Department: PhDr. Renáta Švarcová, svarcova@uniza.sk• Study Advisor: doc. Ing. Jaroslav Mašek, PhD., jaroslav.masek@fpedas.uniza.sk• Erasmus and Student Mobility Coordinator: Vladimír Šalaga, PhD., vladimir.salaga@fpedas.uniza.sk• Coordinator for Psychological Counseling for Students and Employees: PhDr. Miroslava Bruncková, PhD., brunckova@uniza.sk – Counseling and Career Center, including psychological counseling: https://uniza.sk/index.php/studenti/prakticke-informacie/poradenske-a-karierne-centrum-uniza• Contact for UNIZA Catering Facilities: Anna Ďatková, datkova@uniza.sk. Information about catering: https://www.fpedas.uniza.sk/sk/uchadzaci/studentsky-zivot/moznosti-stravovania• Contact for UNIZA Accommodation Facilities for FPEDAS Students: Anna Kačiaková, kaciakova@uniza.sk. Information about student accommodation: https://www.fpedas.uniza.sk/sk/uchadzaci/studentsky-zivot/moznosti-ubytovania• Contact for Social Scholarships: Bc. Jana Závodská, zavodska@uniza.sk. Information about scholarships: https://www.uniza.sk/index.php/studenti/vseobecne-informacie/stipendia• Faculty Coordinator for Students with Special Needs: doc. Ing. Eva Nedeliaková, PhD., nedeliakova@fpedas.uniza.sk. Information for students with special needs: https://www.uniza.sk/index.php/studenti/vseobecne-informacie/studenti-so-specifickymi-potrebami• Coordinator for Study Abroad: Mgr. Lenka Kuzmová, kuzmova@rekt.uniza.sk. Information about studying abroad: https://www.uniza.sk/index.php/studenti/vseobecne-informacie/studium-v-zahranici• Erasmus+ Mobility Coordinator: Mgr. Lenka Kuzmová, kuzmova@rekt.uniza.sk. Information about Erasmus+: https://www.uniza.sk/index.php/studenti/vseobecne-informacie/erasmus• Coordinator for Tuition Fees: Jana Závodská, jana.zavodska@uniza.sk. Information about tuition and fees: https://www.uniza.sk/index.php/studenti/prakticke-informacie/skolne-a-poplatky• University Library Staff: http://ukzu.uniza.sk/kontakt/• Advisors for E-Learning: Ing. Peter Fraňo, frano@uniza.sk, Ing. Peter Malacký, peter.malacky@uniza.sk. Information about e-learning: https://www.uniza.sk/index.php/studenti/prakticke-informacie/e-vzdelavanie <p>Non-Academic Activities for Students:</p> <ul style="list-style-type: none">• Free-time Activities for Students: https://www.fpedas.uniza.sk/sk/uchadzaci/studentsky-zivot/volny-cas• Opportunities in University Student Organizations in Sports and Culture: https://www.uniza.sk/index.php/studenti/studentsky-zivot/studentске-organizacie

8.	Spatial, material, and technical provision of the study programme and support
A	List and characteristics of the study programme classrooms and their technical equipment with the assignment to learning outcomes and courses (laboratories, design and art studios, studios, workshops, interpreting booths, clinics, priest seminaries, science and technology parks, technology incubators, school enterprises, practice centres, training schools, classroom-training facilities, sports halls, swimming pools, sports grounds).



At the level of FPEDAS and UNIZA, sufficient spatial, material, and technical resources of the study program are provided, which are a guarantee of achieving the set goals and outcomes of education.

The faculty is located in the BF building, Univerzitná 1, Žilina. To provide teaching, it uses classrooms managed by the Rectorate of the University of Žilina in Žilina according to the schedule, as well as faculty classrooms and laboratories and departmental laboratories. The operability of these spaces is ensured in terms of hygiene, fire prevention, safety, and health protection at work, and it is assumed that the space is sufficient for the planned number of students.

University-wide classrooms:

- 12 lecture halls with a capacity of 280 to 117 seats,
- 38 classrooms with a capacity of 97 to 25 seats.

A list of university-wide classrooms is available at: <https://www.uniza.sk/document/ZCU.pdf>

Faculty classrooms and laboratories:

18 classrooms and laboratories (internet is available in all areas).

A list of classrooms and laboratories at faculties is available at:

<https://vzdelavanie.uniza.sk/vzdelavanie/download/doc/UNIZA-ucebne-nazvy.pdf>

The Department of Railway Transport is located in the BF building, Univerzitná 8215/1, Žilina. For teaching, it uses classrooms and laboratories managed by the Rectorate of the University of Žilina in Žilina, the Dean's Office of the Faculty of FPEDAS, or the Department of Railway Transport, according to the schedule. Sufficient capacity and operability of these areas are ensured in terms of hygiene and fire protection, as well as occupational health and safety. Laboratory exercises are carried out in computer classrooms (universities, faculties, departments) and in laboratories of other departments (e.g., theoretical electrical engineering). Classrooms and laboratories of the Department of Railway Transport are specialised for teaching selected professional subjects. These include the modernised computer classroom BF 08J with a capacity of 16 places for students, as well as two other classrooms (BF 081 and BF 082) with a capacity of 20 places for students each.

The IT laboratory in room BF088 provides teaching of the following subjects:

- 1I2Z102 Controlling in Railway Transport 1,
- 1I2Z151 Modelling of Transport and Transportation Processes 1,
- 1I2Z152 Prices and Tariffs,
- 1I2Z154 Project on Economic Processes,
- 1I2Z202 Quality Management in Railway Transport,
- 1I2Z203 Modelling of Transport and Transportation Processes 2,
- 1I2Z204 Project on Transportation Processes,
- 1I2Z205 Controlling in Railway Transport 2,
- 1I2Z206 Project on Transportation Processes,
- 1I2Z251 International Railway Transport 2,
- 1I2Z252 Managerial Decision-Making in Practice,
- 1I2Z254 Modelling of Transport and Transportation Processes 3.

The Department of Railway Transport has a properly equipped transport laboratory, whose activities are mainly focused on the educational process within the subjects of laboratory transport training and laboratory exercises, on research activities in the field of new transport technologies, as well as on practical training of instructors and dispatchers of the Slovak Railways.

The transport laboratory is equipped with a model railway circuit with eight stations and one exit and vehicle models, control panels of the station relay security equipment, a track board, and a control box of the station relay security equipment with a digital dial, a PC in the function of an electronic station security equipment. a set of station electromechanical security equipment, PCs in each station of the model railway circuit, which perform the function of relay equipment of station and track security equipment; a PC at the workplace of the dispatcher— head teacher of the laboratory exercise, another PC at the workplace of the dispatcher centralisation; i.e., for remote control of operations at multiple stations from one location; notification devices enabling service connection between individual stations of the model railway circuit, central power supply devices, rectifiers, and accumulator batteries; a closed camera circuit; and a control monitor.

The transport laboratory includes a portable service workshop with the relevant technical equipment (lathe, drills, workbenches with tools, as well as a model railway power supply device with accessories).

The KŽD transport laboratory is a unique specialised classroom in Slovakia. It is intended not only for bachelor's students in the railway transport study program but also for students of other study programs at UNIZA and is also used in professional excursions for students of secondary vocational schools, as well as for ŽSR employees in the framework of mandatory periodic training.

The following subjects are taught in the transport laboratory in room BF08:



	<ul style="list-style-type: none">• 1I2Z106 practical training in the railway laboratory. <p>All classrooms of the university, faculty, and department are equipped with basic didactic equipment and audiovisual equipment. UNIZA premises are covered by a Wi-Fi signal.</p> <p>Students have the opportunity to use the UNIZA science and technology parks.</p> <p>Students of the study program Railway Transport can collaborate on project activities under the guidance of teachers and scientific staff in the Smart City Laboratory and the Human-Machine Interaction Laboratory, which are part of the University Science Park, as well as in other scientific and research workplaces of UNIZA. Research areas of the University Science Park: https://uvp.uniza.sk/oblasti-vyskumu/</p> <p>Technological incubators of UNIZA</p> <p>Students of the study program Railway Transport can participate in a new incubation program, which is intended for students, young researchers, and other interested parties from the commercial environment in creating innovations from various areas. They also can attend a unique university-wide course focused on the development of entrepreneurial and innovative thinking: Entrepreneur Profession - Startup Program: https://uniza.sk/index.php/studenti/studentsky-zivot/povolanie-podnikatel-startup-program</p> <p>At the university level, the structures and processes of spatial, material, and technical provision of study programs are defined by Directive No. 217 Resources to support educational, creative, and other related activities of the University of Žilina in Žilina: directive-UNIZA-c-217.pdf.</p>
B	<p>Characteristics of the study programme information management (access to study literature according to Course information sheets, access to information databases and other information sources, information technologies, etc.)</p> <p>To provide teaching and research activities, employees of the Department of Railway Transport can use:</p> <ul style="list-style-type: none">· book and electronic teaching aids processed and published by FPEDAS UNIZA employees. At the same time, other domestic and foreign study literature and special study materials (regulations, standards, publications) and the relevant professional focus are used,· the UNIZA University Library, which provides library, documentation, research and consulting activities, concentrates a sufficient number of study literature for students and includes study rooms. The University Library of the University of Žilina in Žilina (hereinafter referred to as "UK UNIZA") as the central workplace of the university provides comprehensive library and information activities within the profile of UNIZA, its individual fields and study programmes. Together with partial libraries, Comenius University UNIZA achieved 215,398 library units, subscribed to 241 titles of periodicals, of which 118 were foreign titles. The annual increase was 3,408 library units. <p>Foreign titles represent about 60% of the total library collection. We have 3,032 audiovisual and electronic units in the collection, including 154 digital books and electronic scripts/teaching texts. For users, CU UNIZA has 3 study rooms with a capacity of 216 study places. 3 silent boxes have been added for studying in a separate quiet space for individuals or groups of up to 10 users. Silent boxes allow you to connect to the Internet with your own PC with the possibility of borrowing a data projector and printing materials. The silent boxes have flipcharts and a wall board. There is a workplace for readers with disabilities on the premises of the lending room. In addition to electrically adjustable desks, there is a specially adapted computer with voice input, a special keyboard and a program to facilitate learning. Barrier-free entrance is provided to these areas. In front of the entrance to the library, there is a smart bench with the possibility of connecting to Wi-Fi, charging your phone and other mobile devices. During 2018, 755 users connected to the Wi-Fi on the bench, 173 users used it for wired charging and 31 for wireless charging. In the study rooms, 21,172 library units (basic study literature, electronic and audiovisual documents, final and qualification theses, standards) and periodical literature are freely available for full-time study. In the study rooms (also via other IP addresses of the university), electronic databases corresponding to the course profile of the university are accessible – a total of 14 databases, mostly providing access to full-text sources. The range of services includes access to a database of standards with multiple inputs for individual faculties.</p> <ul style="list-style-type: none">· The number of searches in EIR is 163,195. The number of downloaded/viewed electronic documents from the fund is 96,047. The University Library manages its own website, Facebook and Instagram,· partial library of the Department of Railway Transport, which contains specialized professional literature in the number of 807 book units, while it is constantly innovating. It is in the transport laboratory of the department, including a study room. Part of the partial library is an archive of diploma and bachelor's theses of the department's graduates, which contains about 200 diploma and about 200 bachelor's theses (final theses are archived for 5 years).



- The UNIZA and FPEDAS computer network is a hierarchically arranged distributed network. It consists of one internet domain uniza.sk.
The basic rights and obligations of users are defined by the internal regulations of UNIZA. Teaching staff and researchers have working conditions with internet connection and printing facilities. The computer room of the Department of Railway Transport (BF 088) is equipped with twenty computers with specialized software used in transport and freight forwarding, e.g.: ERIC (modular system in the field of rail freight transport – the database contains a large number of tariff, information, form and document modules), Rail Map (digital railway network of Europe), GPS navigation system, etc.
- Students have access to the Internet not only from all computers located in computer labs, but also from computers located in the Student Information Center and other reserved areas of the faculty and university. In addition, in selected areas of UNIZA accommodation and teaching facilities there are internet connections with the possibility of connecting via their own laptops,
- Information System for the Support of Education - Education - Academic Information and Education System UNIZA (AIVS).
It covers the detached workplaces of the university. The university's Wi-Fi network supports EDUROAM. Currently, AIVS services cover the entire life cycle of a university student from the submission of the application to the final exam and activities related to the completion of studies at the university. AIVS supports the management of the study agenda at faculties and other parts of the university at all levels, forms and types of higher education, as well as decision-making at the level of faculty management. It is used to register applicants, students and graduates, to monitor study results, to support the credit system of studies in accordance with Section 62 of Act 131/2002 Coll., to support the creation of timetables, to record the pedagogical workload of teachers and workplaces, to provide social benefits, scholarships and accommodation. It supports the generation of ECTS information packets (Section 20(1)(e)), activities related to the completion of studies (certificates, diplomas), as well as the processing of diploma supplements (Section 68(1) of the Act).
(c). Logically, the AIVS of the University of Žilina consists of subsystems:

1. Recruitment subsystem

– processing of the application (electronic/classic), results and their evaluation, communication with the applicant (invitations, announcements and statements), processing of statistics for kindergartens.

2. Education subsystem

– consisting of modules:

- Student register

- Administration of studies (study programs, study plans, course information sheets)

- enrolment in studies

- Preparation of the teaching schedule and management of resources (classrooms, technical equipment)

- Administration of exams (announcing exam dates, registering for exams)

- course of study, records of study results, continuous evaluation of study results (internal directive No. 113

Internal system of quality assurance of education at the University of Žilina in Žilina)

- study stays (mobility), the data are part of the student register and are exported to the central student register

3. The 'Completion of Studies' subsystem consists of the modules 'Theses' and 'State Examinations'.

The "Theses" module is aimed at supporting the following activities:

- assignment of topics of final theses by the department or teacher;

- selection of the topic of the final thesis by the student;

- approval and confirmation of the topic and the student by the department;

- export of basic data from AIVS to the local repository of IS of final theses – EZP (Internal Directive No. 103/2018 on final theses under the conditions of UNIZA);

- handing over the finished work to the EHR at UNIZA; import of work status and compliance log data from the EZP.

The "State Examinations" module allows:

- Composition of state exam committees by the department;

- definition of state exam courses;

- enrolment in state exam courses – graduating students;

- distribution of students by days and commissions;

- Entry of exam results for individual state exam courses, record of the evaluation of the final thesis, on-line printing of the Record of State

examination (to be signed by the state examination committee);

- The printing of the diploma is carried out in the study departments.



	<p>Internal Directive No. 103 applies to the preparation of the thesis, its submission to the EZP and subsequent steps. In the conditions of UNIZA, e-learning is built based on LMS Moodle. The organization of courses is based on guided study with the support of information and communication technologies in close connection with the Academic Education and Information System. E-learning has been used at the university since the academic year 2004/2005.</p> <p>AIVS is integrated with other information systems that are part of the university intranet, such as the university library (records of final theses, verification of final theses for originality), accommodation (waiting list, accommodation, records of payments...), issuance of student cards and management of student cards, access system, user management (identity management), attendance system (attendance of doctoral students). AIVS is connected to the system of university e-mail addresses of students and to applications for digital certificates and electronic signatures in selected AIVS services – logging in to the system, signing documents (e.g. exam reports, final theses,...).</p> <p>The UniApps application allows you to access AIVS data and services from mobile devices with Android OS, in accordance with the university's concept of introducing mobile technologies. The university encourages students to use their own mobile devices.</p> <p>UniApps allows access to information regardless of place and time using a mobile device for full-time students at 1st and 2nd level. Currently, the following functionalities are available: schedule, user profile, exam dates, registration for exams, exam results.</p> <p>Sub-processes of the 1st and 2nd degree of higher education supported by AIVS: determination of the conditions of the admission procedure; processing of applications; admission, appeal proceedings; study statuses (enrolments, interruptions, transfer from another university, completion); selection of elective courses; control of studies and enrolment in a higher year; motivational scholarship; listing the topics of final theses and selecting topics; the official assignment of the topics of the final theses; preparation of state examinations; submission of final theses (EZP); state examinations; archiving of documents; export to the CRS.</p>
C	<p>Characteristics and extent of distance education applied in the study programme with the assignment to courses. Access, manuals of e-learning portals. Procedures for the transition from contact teaching to distance learning.</p> <p>The Railway Transport study program is delivered in full-time attendance mode.</p> <p>However, due to the exceptional situation caused by the prevention of COVID-19 spreading, the program was conducted remotely via the MS Teams application from March 2020 onward. Students were adequately informed about this transition in advance through rector's and dean's directives, as well as through email communication with instructors. Each course was assigned to a separate team, where students and teachers were added via allocated addresses. To ensure quality control, superior staff members—such as the program guarantor, department head, vice-dean for education, and dean—were also added to the teams.</p> <p>For lectures and practical exercises, dedicated channels were created for individual study groups within each course. Lecturers provide study materials to students in electronic form, primarily through email, the MS Teams platform, and Moodle.</p>
D	<p>Institution partners in providing educational activities for the study programme and the characteristics of their participation.</p> <p>The provision of education is supported by the participation of the following organizations:</p> <ul style="list-style-type: none">• Železnice Slovenskej republiky (Railways of the Slovak Republic) - support for courses such as "Professional Practice," "Professional Excursion," and "Transport Course 1, 2";• Železničná spoločnosť Slovensko, a.s. (Slovak Passenger Railway Company) - support for courses such as "Professional Practice" and "Professional Excursion";• Železničná spoločnosť Cargo Slovakia, a.s. (Slovak Cargo Railway Company) - support for courses such as "Professional Practice" and "Professional Excursion." <p>These and many other practical partners, including state authorities, contribute to supporting educational activities such as:</p> <ul style="list-style-type: none">• Specialized guest lectures,• Supervision of final theses,• Reviewing final theses,• Participation in state examination committees,• Organizing professional excursions,• And other activities.



E	<p>Characteristics of the possibilities for social, sports, cultural, spiritual and social activities</p> <p>Opportunities for Social, Sports, Cultural, Spiritual, and Community Activities are described in Directive No. 217, particularly in Articles 17, 18, and 19 .</p> <p>You can find further details via the provided link: smernica-UNIZA-c-217.pdf</p>
F	<p>Possibilities and conditions for participation of the study programme students in mobilities and internships, application instructions, rules for recognition of this education</p> <p>All students of the Railway Transport study program have an equal and transparent access to mobility opportunities, provided they meet the conditions – criteria of the respective mobility form, as defined by Directive No. 219, Article 3, Paragraph 1.</p> <p>Conditions:</p> <ol style="list-style-type: none">1. a) Submission of an application for exchange studies and confirmation of acceptance by the partner institution (international mobility or internship).2. b) Agreement between the respective partner institutions regarding studies (in cases of collaboration between UNIZA and FPEDAS with another partner institution that has an accredited study program in the relevant field of study at the partner institution or a similar field of study at a foreign partner institution with a certified/accredited internal quality assurance system for higher education or ESG 2015).3. c) Agreement between the respective partner institutions on a joint study program, which is also jointly accredited as a joint study program in accordance with the internal quality assurance system of higher education at UNIZA (Directive No. 219, Article 2, Paragraph 3). <p>Any student approved by the selection committee and who submits proof of approval for an international study stay can complete part of their studies at a foreign university (the receiving institution) within the framework of European Union programs such as Erasmus+, the National Scholarship Program, SAIA, the Fulbright Commission, cross-border cooperation, bilateral programs, and others.</p> <p>The courses completed at the receiving institution are recognized by the program guarantor in cooperation with the Vice Dean for Education based on the student's request. This request must include a transcript of study results, issued by the receiving institution upon completion of the stay, as well as course syllabi or descriptions of the completed courses (Directive No. 219, Article 8).</p> <p>Responsible Persons:</p> <ul style="list-style-type: none">• doc. Ing. Martin Bugaj, PhD. Vice Dean Faculty Erasmus+ Coordinator Tel.: +421 41 513 3467 E-mail: martin.bugaj@fpedas.uniza.sk• Ing. Vladimír Šalaga, PhD. Erasmus+ Mobility Coordinator FPEDAS Room: BF252 Tel.: +421 41 513 3062 E-mail: salaga@fpedas.uniza.sk <p>Mobility Statistics and References:</p> <p>Under normal circumstances, more than 50 faculty students travel abroad annually for studies (Faculty Annual Reports, Table 28): Faculty Scientific Council.</p> <p>University-Level Guidelines:</p> <ol style="list-style-type: none">1. Directive No. 209 – Study Regulations for the 1st and 2nd Levels of Higher Education at the University of Žilina, Article 7, Paragraphs 7–12: 02092021_S-209-2021-Study-Regulations.pdf2. Directive No. 219 – Mobility of Students and Staff of the University of Žilina Abroad: smernica-UNIZA-c-219.pdf



9.	Required abilities and admission requirements for the study programme applicants
A	<p>Required abilities and necessary admission requirements</p> <p>The required skills and prerequisites for admission to the study program are formalized as follows:</p> <p>Relevant Directives and Documents:</p> <ul style="list-style-type: none">• Directives: Admission procedure is governed by Directive No. 209, Article 5, and Directive No. 218, Articles 8 and 9. (Study Regulations)• Document approved by the FPEDAS Academic Senate: “Principles and Rules of the Admission Procedure for Study at the Faculty of Operation and Economics of Transport and Communications for the 2nd Level of Study” (Admission Procedure Guidelines).• Dean’s orders and methodological guidelines available on the faculty’s website. <p>Basic Admission Requirements:</p> <ol style="list-style-type: none">1. The basic requirement for admission to a 2nd-level study program is the completion of a bachelor’s degree (1st level of higher education) in the relevant field, as specified by Act No. 131/2002 Coll. on Higher Education (as amended).2. For international applicants or students who completed their studies abroad, they must submit, with their application or no later than enrollment, a decision recognizing their bachelor’s degree by a competent institution in Slovakia. Alternatively, they may request UNIZA to recognize their degree.3. Applicants must demonstrate written and spoken proficiency in Slovak or Czech. <p>Admission Without an Entrance Exam:</p> <ol style="list-style-type: none">1. Applicants with a weighted study average from their bachelor’s degree program are admitted without an entrance exam for the following study programs:<ul style="list-style-type: none">○ Road Transport (specializations: Road Transport, Expert Activities in Road Transport),○ Railway Transport,○ Air Transport (specializations: Air Transport, Aircraft Maintenance Technology),○ Freight Forwarding and Logistics,○ Postal Engineering.2. Applicants to the following study programs are admitted without an entrance exam if they achieved a weighted average of 2.00 or better during their bachelor’s studies:<ul style="list-style-type: none">○ Economics and Business Management,○ Financial Management,○ E-commerce and Management.3. Other applicants are required to take an entrance exam. <p>Entrance Exam Details:</p> <ol style="list-style-type: none">1. The entrance exam is conducted in the form of a knowledge test from the 1st-level study program.2. Exam topics include:<ul style="list-style-type: none">○ Economics,○ Mathematics,○ A selected foreign language (English, Spanish, German, French, or Russian).3. Applicants respond to questions by marking answers on test sheets for each subject area.4. Scores range from 0 to 100 points based on correct answers.



	<p>5. Applicants with specific needs may request an alternative exam format. The Dean determines the format based on the applicant's needs, in accordance with §100 (9)(b) of the Higher Education Act and Directive No. 198 – Support for Applicants and Students with Specific Needs at UNIZA.</p> <p>6. Applicants must present the following at the entrance exam:</p> <ul style="list-style-type: none">○ ID card,○ Bachelor's diploma and diploma supplement.○ If these documents are unavailable, they must be submitted by the enrolment day for the master's program.
B	<p>Admission procedures</p> <p>Admission procedures are formalized through the following documents:</p> <ul style="list-style-type: none">• Directives:<ul style="list-style-type: none">○ Directive No. 209, Article 5 (Study Regulations).○ Directive No. 218, Articles 8 and 9 (Directive PDF).• Document approved by the FPEDAS Academic Senate: "Principles and Rules of the Admission Procedure for Study at the Faculty of Operation and Economics of Transport and Communications for the 2nd Level of Study" (Document Link).• Dean's Orders and Methodological Guidelines: Published on the faculty website. <p>Admission Rules</p> <ol style="list-style-type: none">1. Application Submission: Applicants must submit their application for a specific study program. If applying for multiple study programs at FPEDAS, a separate application and fee are required for each program.2. Applications to Multiple Faculties: Applicants wishing to apply to multiple faculties of UNIZA must submit separate applications and pay the corresponding fee for each faculty.3. Application Form: Applicants can complete the application via:<ul style="list-style-type: none">○ UNIZA's website (Electronic Applications).○ National Portal for Higher Education Applications (Application Portal).4. Incomplete Applications: Incomplete applications will result in a request for additional information.5. Non-Refundable Fees: Fees for the admission process are non-refundable, even in cases of non-attendance or unsuccessful admission.6. Attachments to the Application for Master's Studies:<ul style="list-style-type: none">○ CV (Curriculum Vitae).○ Proof of payment for the admission process.○ Bachelor's degree diploma.7. Electronic Submission: All application attachments must also be submitted electronically alongside the application.8. Admission Fee Amounts (per application):<ul style="list-style-type: none">○ €20 for EU citizens.○ €50 for non-EU citizens.9. Payment Instructions: Payments should be made to:



- Recipient: University of Žilina, Univerzitná 1, 010 26 Žilina.
- Bank: State Treasury.
- IBAN: SK81 8180 0000 0070 0026 9888.
- Constant Symbol: 0308.
- Variable Symbol: 10132 (for Master's studies).

10. Payment Methods:

Payments can be made via bank transfer or postal order to the above account.

- For SEPA Transactions:
 - BIC: SPSRSKBAXXX.
 - IBAN: SK81 8180 0000 0070 0026 9888.

11. Tuition Fees:

Tuition fees are determined in accordance with the Higher Education Act and are published on the university's website for each academic year.

12. Application for Czech Applicants:

Applicants from the Czech Republic may use the application form valid in their country.

13. Application Submission Conditions:

- Applications must be submitted by the specified deadline.
- The application fee must be paid by the specified deadline to be considered for the admission process.

C

Results of the admission process over the last period

The admission results are regularly published in the Annual Report on Faculty Activities under the "Educational Activities" section:

[Official Board Link.](#)

Admission Process Overview

1. Admitted Students:

Students are admitted based on:

- Meeting the prerequisites for admission without an entrance exam.
- Passing the entrance exam and being included in the list of admitted candidates.

2. Selection Process for Admitted Candidates:

- Candidates are ranked based on their scores from the entrance test covering high school material.
- The final number of admitted students is determined by the Dean of the Faculty, considering program capacity.

3. Notification of Results:

- Candidates admitted without an entrance exam are informed via UNIZA's website ([Admission Portal](#)).
- Candidates who took the entrance exam receive information about their acceptance/non-acceptance and scores through the same portal.

4. Official Decision Letters:

- Admitted candidates receive an acceptance letter signed by the Dean and the Vice-Dean for Education within 30 days.
- Non-admitted candidates are issued rejection letters within the same timeframe.

5. Enrollment Process:

- The acceptance letter includes detailed instructions for enrollment.



	<p>6. Right to Documentation Review:</p> <ul style="list-style-type: none">○ Each candidate has the right to review their admission process documentation upon request. <p>7. Conditional Admission:</p> <ul style="list-style-type: none">○ Candidates with objective reasons for not meeting basic admission conditions may be conditionally admitted, subject to approval by the Dean.○ Conditional acceptance is void if the candidate fails to fulfill the conditions by the specified enrollment date. <p>8. Foreign Applicants:</p> <ul style="list-style-type: none">○ The admission conditions are the same as for Slovak applicants.○ Tuition fees are applicable to students studying in a language other than Slovak, as outlined in § 92 (8) of the Higher Education Act.○ Foreign students studying in Slovak do not pay tuition fees.○ Candidates lacking proficiency in Slovak or Czech are required to complete a language preparation course (available at UNIZA). <p>9. Special Conditions for Government Scholars and Bilateral Agreement Applicants:</p> <ul style="list-style-type: none">○ These applicants are subject to the conditions specified in relevant agreements or government policies. <p>This process is outlined in the document: "Principles and Rules of the Admission Process for Study at the Faculty of Operation and Economics of Transport and Communications for the 2nd Level of Study (Academic Year 2021/2022):" Admission Guidelines.</p> <p>The guidelines were approved by the FPEDAS Academic Senate.</p>
--	-----------------------------------------------------------------------------------------------------------------------------------------------------------------------------------------------------------------------------------------------------------------------------------------------------------------------------------------------------------------------------------------------------------------------------------------------------------------------------------------------------------------------------------------------------------------------------------------------------------------------------------------------------------------------------------------------------------------------------------------------------------------------------------------------------------------------------------------------------------------------------------------------------------------------------------------------------------------------------------------------------------------------------------------------------------------------------------------------------------------------------------------------------------------------------------------------------------------------------------------------------------------------------------------------------------------------------------------------------------------------------------------------------------------------------------------------------------------------------------------------------------------------------------------------------------------------------------------------------------------------------------------------------------------------------------

10.	Feedback on the quality of provided education
A	<p>Procedures for monitoring and evaluating students' opinions on the study programme quality</p> <p>The procedures for monitoring and evaluating student opinions on the quality of study programs are regulated by Directive No. 223: "Monitoring and Periodic Evaluation of Study Programs" Directive Link.</p> <p>Collection and Use of Feedback</p> <p>The Faculty of Operation and Economics of Transport and Communications (FPEDAS) collects, analyzes, and utilizes relevant information from students. These data are evaluated and reflected in the Annual Report on FPEDAS Activities: Annual Reports.</p> <p>Additionally, survey reports are used to manage the study program, including Railway Transport, and adjustments are made accordingly. The faculty monitors student satisfaction with:</p> <ul style="list-style-type: none">• Education quality• Instructor-student interaction <p>Reports are published for each semester of the academic year and can be accessed here: Quality of Education Reports.</p>
B	<p>Results of student feedback and related measures to improve the study programme quality</p> <p>The Faculty monitors student satisfaction with the quality of education and the approach of instructors at the level of study programs, including the Railway Transport program. Reports are published for each semester and are available at</p>



	<p>the following link: Quality of Education Results.</p> <p>Evaluation Process and Discussions</p> <p>The results of evaluations regarding the quality of education and the teaching approaches of individual instructors are regularly discussed during Dean's Collegium meetings. Subsequently, department heads address these results during the annual employee evaluation at the university level, using data obtained from the e-evaluation system: Online Evaluation Results.</p> <p>The Department of Railway Transport, which administers the Railway Transport study program, discusses these outcomes with its staff as part of its ongoing quality assurance and improvement processes.</p> <p>Availability of Employee Evaluation Reports</p> <p>Reports from the evaluation of staff are available for physical inspection on-site. These reports provide critical insights into the performance and teaching effectiveness of the faculty, ensuring continuous quality improvements in education delivery.</p>
C	<p>Results of graduate feedback and related measures to improve the study programme quality.</p> <p>The faculty monitors feedback from graduates at the level of study programs, including the Railway Transport program, through the portal: https://fpedas.uniza.sk/~dotaznik/, where results are electronically evaluated and subsequently published in the Annual Activity Report of FPEDAS in section 2.7 "Graduates and Their Employment":</p> <ul style="list-style-type: none">• 2023 (p. 28): Link to report• 2022 (p. 29): Link to report• 2021 (p. 27): Link to report• 2020 (p. 30): Link to report• 2019: Results were not published due to insufficient sample size.• 2018 (p. 29): Link to report• 2017 (p. 20): Link to report• 2016 (p. 20): Link to report• 2015 (p. 19): Link to report• 2014 (p. 22): Link to report <p>Feedback results are evaluated during departmental meetings of the Railway Transport Department responsible for the program and in Dean's Collegium sessions. Based on the information gathered from alumni feedback, measures are adopted to improve and refine the program and its outcomes.</p>

11.	References to other relevant internal regulations and information concerning the study or the study programme student (e.g study guide, accommodation regulations, fee directive, guidelines for student loans, etc.).
Internal regulations and information	Link
S 236_2023 Statute of UNIZA	https://www.uniza.sk/images/pdf/uradna-tabula/smernice-predpisy/2023/28022023_S-236-2023-Statut-UNIZA.pdf
S 106_2012 Statute of UNIZA as amended by Appendices 1 to 5	https://www.uniza.sk/images/pdf/uradna-tabula/17012019_S-106-2012-Statut-UNIZA-v-zneni-Dodatkov1-az-5.pdf
S 110_2013 Study Regulations for the 3rd Degree of Higher Education Studies at UNIZA Appendices 1 to 3	https://www.uniza.sk/images/pdf/uradna-tabula/smernice-predpisy/10122020_S-110-2013-Studijny-poriadok-PhD-v-zneni-D1-a-D3.pdf



<i>S 132_2015 on free access to information</i>	http://uniza.sk/document/Zasady_SI_ZU_VI-2015.pdf
<i>S 149_2016 Organizational Rules as amended by Supplements No. 1 to 17</i>	https://www.uniza.sk/images/pdf/uradna-tabula/smernice-predpisy/2021/02092021_S-149-2016-Organizacny-poriadok-UNIZA-D1-az-D16-07062021.pdf
<i>S 152_2017 Principles of UNIZA Editorial Activities as amended by Appendix No. 1</i>	SM152-zasady-edicnej-cinnosti-31032020.pdf (uniza.sk)
<i>S 159_2017 Work Regulations</i>	https://www.uniza.sk/images/pdf/uradna-tabula/smernice-predpisy/S-159_2017-Pracovn-poriadok_03112017.pdf
<i>S 163_2018 Accommodation Rules of Accommodation Facilities UNIZA</i>	https://www.uniza.sk/images/pdf/ubytovanie/27082018_Ubytovaci-poriadok-od-01092018.pdf
<i>S 167_2018 Rules of Procedure disciplinary. UNIZA Commission, as amended Dodat_č_1</i>	https://www.uniza.sk/images/pdf/uradna-tabula/smernice-predpisy/2021/09072021_S-167-2018-Rokovaci-poriadok-disciplinarnych-komisii-UNIZA.pdf
<i>S 180_2019 Grant system of the University of Žilina in the wording D1 to D2</i>	04082021_S-180-2021-Grantovy-system-Zilinskej-univerzity-v-Ziline-v-zneni-Dodatku-c-2-26072021.pdf (uniza.sk)
<i>S 200_2021 Principles of the selection procedure</i>	https://www.uniza.sk/images/pdf/uradna-tabula/smernice-predpisy/2021/02092021_S-200-2021-Zasady-vyberoveho-konania.pdf
<i>S 202_2021 Criteria for the obsadz_funkcii of professors and associate professors and principles obsadz_funkcii host_profesorov</i>	https://www.uniza.sk/images/pdf/kvalita/2021/smernica-UNIZA-c-202.pdf
<i>S 207_2021 UNIZA Code of Ethics</i>	https://www.uniza.sk/images/pdf/uradna-tabula/smernice-predpisy/2021/12072021_S-207-2021-Etický-kodex-UNIZA.pdf
<i>S 208_2021 Rules for získavanie_zosúlad' úprava and zruš_práv for habilitation and inauguration proceedings</i>	https://www.uniza.sk/images/pdf/kvalita/2021/smernica-UNIZA-c-208.pdf
<i>S 210_2021 Statute of the UNIZA Accreditation Council</i>	https://www.uniza.sk/images/pdf/kvalita/2021/smernica-UNIZA-c-210.pdf
<i>S 211_2021 Procedure for obtaining scientific-pedagog_titulov and artistic-pedag_titulov</i>	https://www.uniza.sk/images/pdf/kvalita/2021/smernica-UNIZA-c-211.pdf
<i>S 213_2021 Quality assurance policies at UNIZA</i>	https://www.uniza.sk/images/pdf/kvalita/2021/smernica-UNIZA-c-213.pdf
<i>S 214_2021 Internal Quality System Structures</i>	https://www.uniza.sk/images/pdf/kvalita/2021/smernica-UNIZA-c-214.pdf
<i>S 216_2021 Quality Assurance of Doctoral Studies at UNIZA</i>	https://www.uniza.sk/images/pdf/kvalita/2021/smernica-UNIZA-c-216.pdf
<i>S 220_2021 Evaluation of the creative activity of employees in relation to the zabezpečov_kvality of education at UNIZA</i>	https://www.uniza.sk/images/pdf/kvalita/2021/smernica-UNIZA-c-220.pdf
<i>S 221_2021 Cooperation of UNIZA with external partners from practice</i>	https://www.uniza.sk/images/pdf/kvalita/2021/smernica-UNIZA-c-221.pdf
<i>S 222_2021 Internal quality assurance system at UNIZA</i>	https://www.uniza.sk/images/pdf/kvalita/2021/smernica-UNIZA-c-222.pdf
<i>UNIZA website</i>	www.uniza.sk
<i>UNIZA Internal Quality Management System</i>	https://www.uniza.sk/index.php/univerzita/vseobecne-informacie/vnutorny-system-kvality



12. Study Plan of the Study	
Credits	
Number of credits for compulsory courses	105
Number of credits for the final thesis	15
Minimum number of credits for compulsory elective courses	15
Minimum number of credits for elective courses	-
Minimum number of credits per semester	30
Credits required for professional practice to complete the study program	-
Credits required for professional practice to complete a part of the study program	-



Study plans

Course	Short	Opt.	Hours	End	Credits	Profile	Core	Guarantor
1. year								
winter semester								
1I2M102 Operational Analysis 1	OA1	Cmp.	2 - 0 -	S	5.0	-	yes	RNDr. Oľga Blažeková, PhD.
1I2P101 Foreign language A	CJA	Cmp.	0 - 2 -	H	3.0	-	-	Mgr. Katarína Smolková
1I2Z101 International Railway Transport 1	IRT 1	Cmp.	2 - 1 -	S	4.0	yes	yes	doc. Ing. Vladislav Zitrický, PhD.
1I2Z102 Controlling in Railway Transport 1	CoRT1	Cmp.	3 - 0 -	S	7.0	yes	yes	prof. Ing. Anna Dolinayová, PhD.
1I2Z103 Project Management in Transport	PMT	Cmp.	1 - 2 -	S	5.0	yes	yes	doc. Ing. Eva Nedeliaková, PhD.
1I2Z104 Railway Transport Technology	RTT	Cmp.	2 - 2 -	S	6.0	yes	yes	prof. Ing. Jozef Gašparík, PhD.,
1I2P001 Physical Education A	PhEduA	Opt.	0 - 2 -	H	2.0	-	-	PaedDr. Marián Hrabovský, PhD.
1I2P002 Physical Education Camp A	PhEdCA	Opt.	0 - 1 -	S	1.0	-	-	PaedDr. Ľudmila Malachová
1I2Z106 Transport Trainings in Laboratory	TTL	Opt.	0 - 0 -	H	2.0	-	-	Ing. Pavol Meško, PhD.
1I2Z107 Technical Excursion A	TeExA	Opt.	0 - 1 -	H	2.0	-	-	doc. Ing. Martin Kendra, PhD.
summer semester								
1I2M151 Operational Analysis 2	OA2	Cmp.	2 - 0 -	S	5.0	-	yes	RNDr. Oľga Blažeková, PhD.
1I2P151 Foreign language B	CJB	Cmp.	0 - 2 -	S	3.0	-	-	Mgr. Katarína Smolková
1I2Z151 Modelling of Traffic and Transportation	MTTP1	Cmp.	2 - 0 -	S	6.0	yes	yes	doc. Ing. Juraj Čamaj, PhD.
1I2Z152 Prices and Tariffs	PTRT	Cmp.	2 - 0 -	S	6.0	yes	yes	prof. Ing. Anna Dolinayová, PhD.
1I2Z153 Integrated Transport Systems	IntegTS	Cmp.	2 - 2 -	S	4.0	yes	yes	doc. Ing. Martin Kendra, PhD.
1I2Z154 Project on Economic Processes	PoEP	Cmp.	1 - 0 -	S	6.0	yes	yes	doc. Ing. Eva Brumerčíková,
1I2C155 Packing of Goods and Loading Cargo	PGLC	Opt.	2 - 2 -	S	5.0	-	-	doc. Ing. Juraj Jagelčák, PhD.
1I2P003 Physical Education B	PhEduB	Opt.	0 - 2 -	H	2.0	-	-	PaedDr. Marián Hrabovský, PhD.
1I2P004 Physical Education Camp B	PhEdCB	Opt.	0 - 1 -	H	1.0	-	-	PaedDr. Ľudmila Malachová
1I2Z156 Technical Excursion B	TeExB	Opt.	0 - 1 -	H	2.0	-	-	doc. Ing. Martin Kendra, PhD.
2. year								
winter semester								
1I2V201 Logistics	LOG	Cmp.	2 - 1 -	S	4.0	-	yes	doc. Ing. Andrej Dávid, PhD.
1I2Z201 Passenger Transport and Transportation	PTT1	Cmp.	2 - 1 -	S	5.0	yes	-	doc. Ing. Martin Kendra, PhD.
1I2Z202 Quality Management in Railway Transport	QMRT	Cmp.	2 - 0 -	S	5.0	yes	yes	doc. Ing. Eva Nedeliaková, PhD.
1I2Z203 Modelling of Traffic and Transportation	MTTP2	Cmp.	1 - 0 -	S	5.0	yes	yes	doc. Ing. Juraj Čamaj, PhD.
1I2Z204 Project on Transportation Processes	PTPr	Elc.	1 - 0 -	H	6.0	yes	yes	prof. Ing. Anna Dolinayová, PhD.
1I2Z205 Controlling in Railway Transport 2	CoRT2	Elc.	2 - 0 -	S	5.0	yes	yes	prof. Ing. Anna Dolinayová, PhD.
1I2Z206 Project on Transport Processes	PTTP	Elc.	1 - 0 -	S	6.0	yes	yes	prof. Ing. Jozef Gašparík, PhD.,



Course	Short	Opt.	Hours	End	Credits	Profile	Core	Guarantor
112Z207 Railway Transport Infrastructure	RTI	Elc.	2 - 2 -	S	5.0	yes	yes	prof. Ing. Jozef Gašparík, PhD.,
112C203 Transport Planning and Sustainable Mobility	TPSM	Opt.	2 - 2 -	S	5.0	-	-	doc. Ing. Marián Gogola, PhD.
112P005 Physical Education C	PhEdC	Opt.	0 - 2 -	H	2.0	-	-	PaedDr. Marián Hrabovský, PhD.
112P006 Physical Education Camp C	PhEdCC	Opt.	0 - 1 -	H	1.0	-	-	PaedDr. Ľudmila Malachová
112S107 E-commerce	Ecom	Opt.	2 - 0 -	S	5.0	-	-	prof. Ing. Radovan Madleňák,
112Z208 Technical Excursion C	TeExC	Opt.	0 - 1 -	H	2.0	-	-	doc. Ing. Martin Kendra, PhD.
summer semester								
112Z250 Final Thesis	FinT	Cmp.	0 - 2 -	S	15.0	yes	yes	doc. Ing. Jaroslav Mašek, PhD.
112Z251 International Railway Transport 2	IRT2	Cmp.	3 - 0 -	S	6.0	yes	yes	doc. Ing. Bibiána Buková, PhD.
112Z252 Managerial Decision-Making in Practice	MDMP	Cmp.	3 - 0 -	S	5.0	yes	yes	doc. Ing. Eva Nedeliaková, PhD.
112Z253 Strategic Management in Railway Transport	SMiRT	Elc.	3 - 0 -	S	4.0	-	yes	doc. Ing. Eva Nedeliaková, PhD.
112Z254 Modelling of Transport and Transportation	MTTP3	Elc.	1 - 2 -	H	4.0	-	yes	doc. Ing. Jaroslav Mašek, PhD.
112C251 Transport of Dangerous Goods	TDG	Opt.	4 - 0 -	S	5.0	-	-	doc. Ing. Juraj Jagelčák, PhD.
112E254 European Structural and Investment Funds	ESFS	Opt.	2 - 0 -	S	3.0	-	-	prof. Ing. Pavol Kráľ, PhD.
112P007 Physical Education D	PhEdD	Opt.	0 - 2 -	H	2.0	-	-	PaedDr. Marián Hrabovský, PhD.
112P008 Physical Education Camp D	PhEdCD	Opt.	0 - 1 -	H	1.0	-	-	PaedDr. Ľudmila Malachová
112Z256 Technical Excursion D	TeExD	Opt.	0 - 1 -	H	2.0	-	-	doc. Ing. Martin Kendra, PhD.